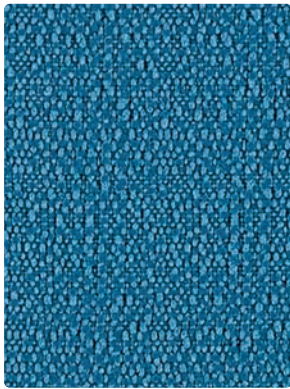


# AFFINITY PLUS COORDINATES

---



## SEQUEL



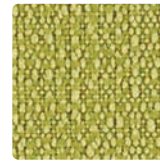
312-044  
Cyan



312-039  
Mango



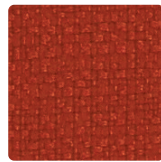
312-001  
Crimson



312-063  
Pear



312-000  
Mocha



312-009  
Paprika



312-004  
Royal

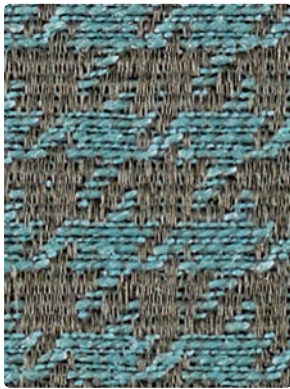


312-027  
Parchment

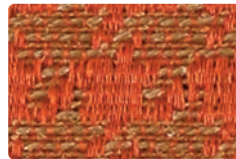


312-006  
Ebony

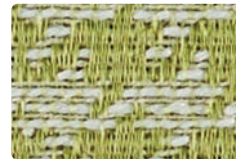
## SHERLOCK



397-013  
Aquatint



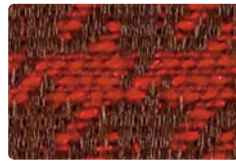
397-009  
Mandarin



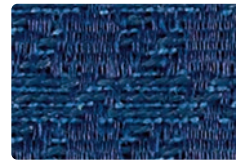
397-003  
Mint



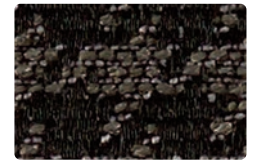
397-007  
Straw



397-001  
Rouge

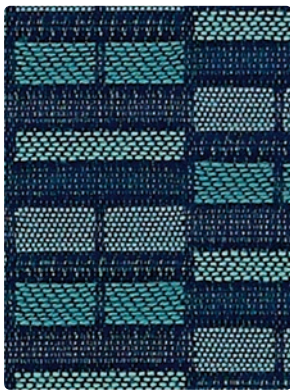


397-004  
Royal

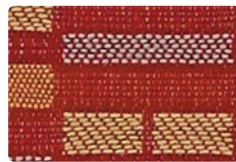


397-006  
Charcoal

## PATIO



420-004  
Oceanic



420-001  
Sangria



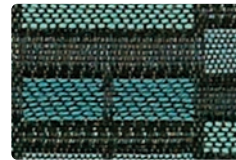
420-013  
Citron



420-007  
Vellum



420-016  
Cyberspace

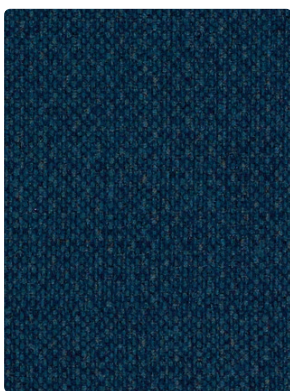


420-024  
Aquatint



420-000  
Basket

## KEY LARGO



KL-004  
Ultramarine



KL-009  
Tangerine



KL-033  
Pear



KL-012  
Wheat



KL-010  
Toast



KL-001  
Crimson



KL-024  
Nassau



KL-027  
Sand



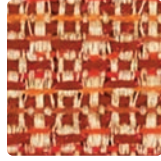
KL-006  
Graphite

Additional colors are available. Please refer to the Mayer Fabrics website.

## VALET



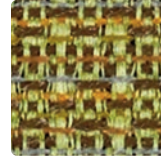
399-004  
Oceanic



399-009  
Amber



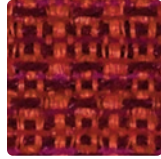
399-002  
Chamois



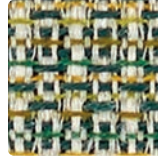
399-003  
Jungle



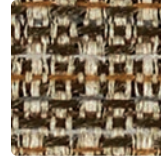
399-007  
Pearl



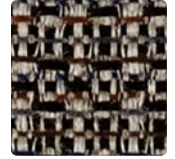
399-001  
Rouge



399-013  
Jadeite



399-010  
Oyster

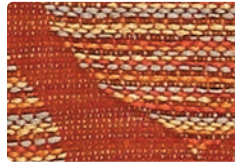


399-006  
Sultry

## BATIK



396-004  
Seaworthy



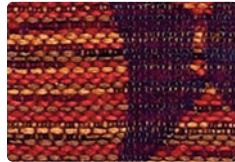
396-009  
Amber



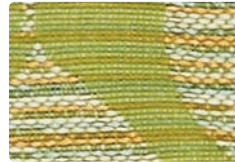
396-002  
Bamboo



396-007  
Sandalwood



396-008  
Ablaze



396-003  
Limeade



396-006  
Blue Clay



396-005  
Cyberspace



396-013  
Jungle

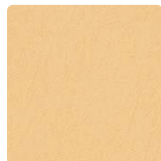


396-000  
Ember

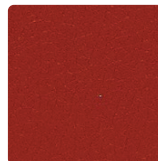
## DURANGO



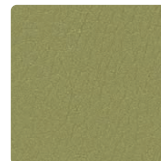
DU-024  
Aegean



DU-002  
Chamois



DU-001  
Paprika



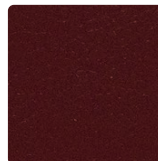
DU-023  
Jade



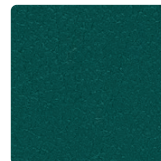
DU-007  
Natural



DU-019  
Sepia



DU-008  
Merlot



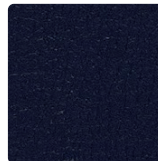
DU-033  
Calypso



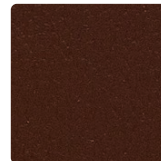
DU-016  
Char



DU-009  
Tangelo



DU-004  
Sapphire



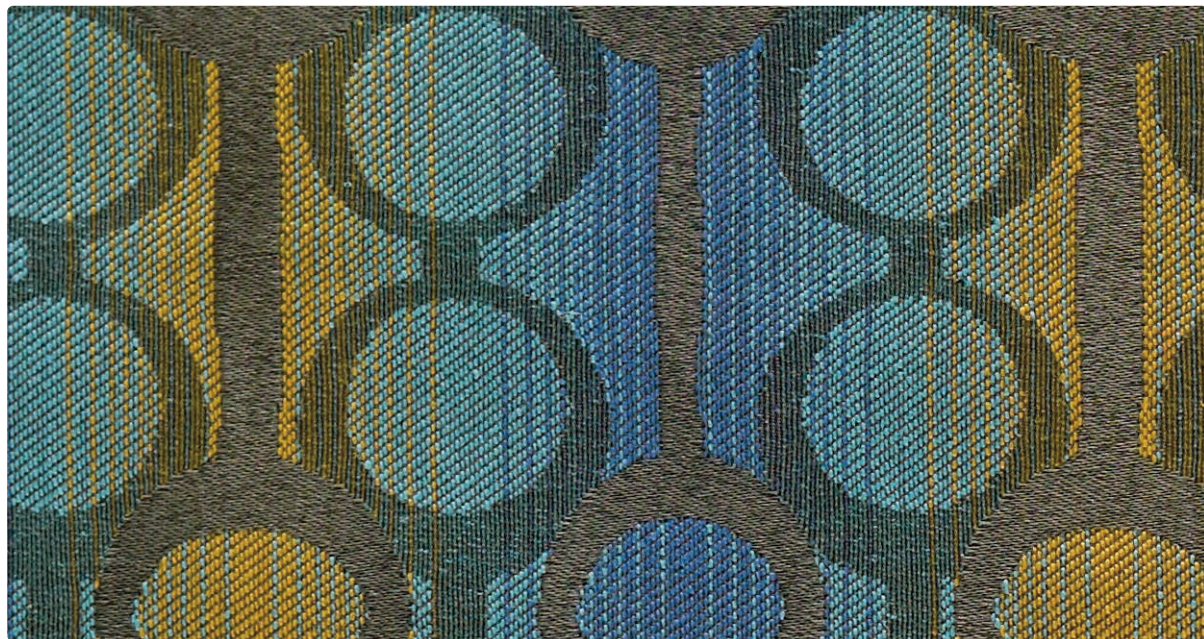
DU-000  
Cocoa



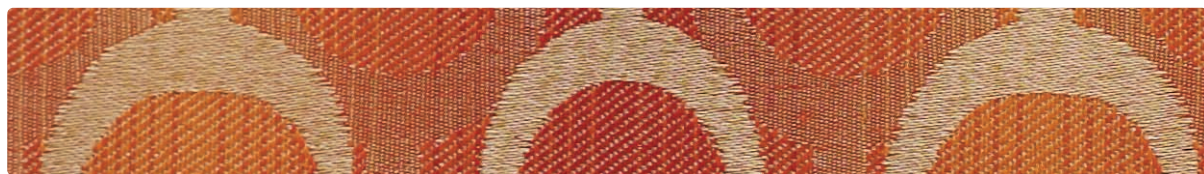
DU-006  
Black

Additional colors are available. Please refer to the Mayer Fabrics website.

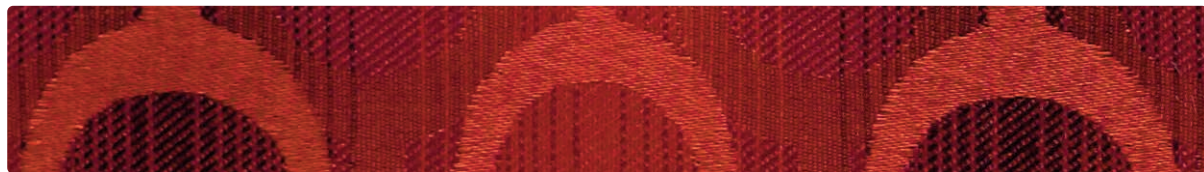
## ALIGN



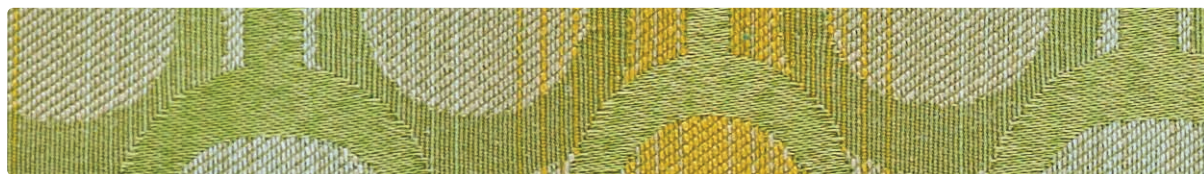
398-014  
Moody Blue



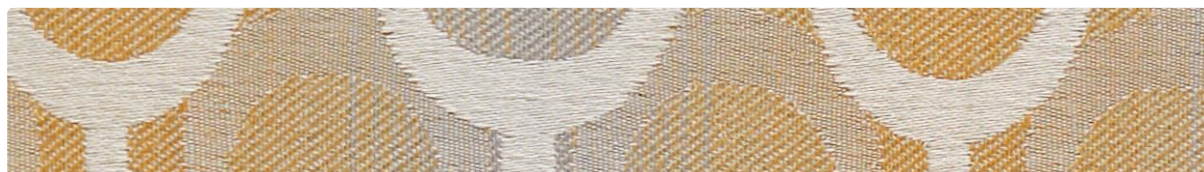
398-009  
Fruit Punch



398-001  
Cardinal



398-003  
Limeade



398-007  
Sea Salt

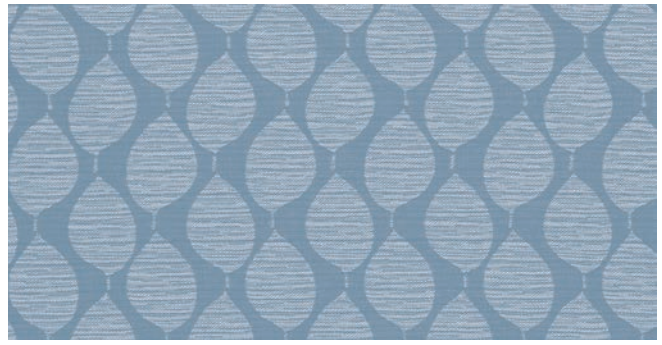


398-006  
Java

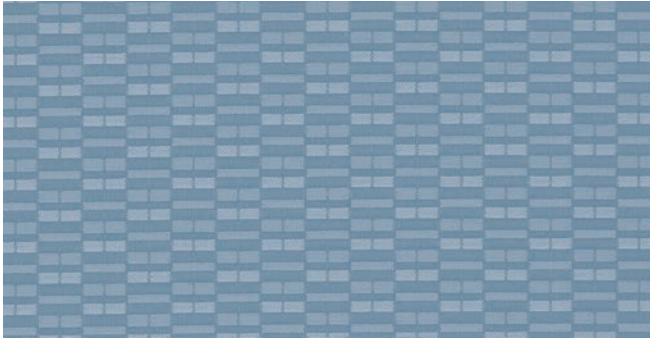
Additional colors are available. Please refer to the Mayer Fabrics website.



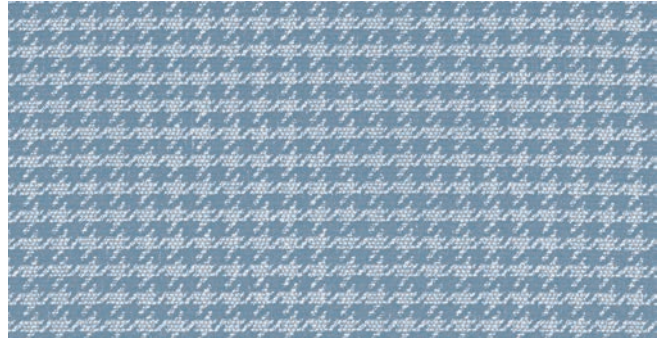
ALIGN - Repeat: 3.625" H, 4.438" V - Shown Railroaded



BATIK - Repeat: 2.5" H, 5" V



PATIO - Repeat: 1.875" H, 1.25" V



SHERLOCK - Repeat: 0.625" H, 1.125" V

## CARE AND CLEANING INFORMATION

**WS:** Water/Solvent Cleaner – Spot clean with a mild solvent, an upholstery shampoo, or the foam from a mild detergent. When using a solvent or dry cleaning product follow instructions carefully and clean only in a well-ventilated room. Avoid any product that contains carbon tetrachloride or other toxic materials. With either method, pretest a small area before proceeding. Always rinse promptly with clean water.

**Align, Batik, Durango, Key Largo, Patio, Sherlock, Valet**

**BC:** **Bleach Cleanable** - 1 part bleach, 9 parts water = 10% bleach, 90% water solution. Do not clean/disinfect fabric for longer than 10 minutes using the 10% bleach solution. Always rinse promptly with clean water after applying the bleach solution. Failure to do so will void any and all warranties.

**For additional care and cleaning information by pattern, please refer to the Mayer Fabrics website.**

## SPECIFIC TREATMENTS - Durango

**PreFixx<sup>®</sup>** Protective Finish    Anti-Microbial/Anti-Bacterial Protection    Anti-Stain Finish/Easily Cleaned    Anti-Static Slip Finish    Urine Stain Resistant  
Mildew Resistant    Superior Disinfectant Resistance    Oil Resistant    Sulfide Stain Resistant/All Colors    UV Stabilized Pigments

**PreFixx<sup>®</sup>** The first protective finish that starts where other finishes finish. With **PreFixx<sup>®</sup>** protection, it is possible to remove stains that could never be removed before. Now, with cost-proven stain resistance and cleanability, plus superior abrasion resistance, **PreFixx<sup>®</sup>** protected vinyls protect you from high maintenance and frequent reupholstery costs.

## SPECIFIC TREATMENTS - Key Largo

Stain Resistant with Resilience<sup>SR</sup>    Abrasion Resistant    Anti-Bacterial    Anti-Microbial    Bleach Cleanable    Mildew Resistant    Sulfide Stain Resistant



**Resilience<sup>SR</sup>** represents the latest technology in faux leather and vinyl protection, enhancing performance where it is needed the most.

**Stain Resistance:** With proper care, materials treated with **Resilience<sup>SR</sup>** can be easily cleaned and will guard against stains, maintaining the desired surface appearance for years to come.

**Anti-Microbial & Anti-Bacterial Protection:** Products treated with **Resilience<sup>SR</sup>** are engineered to inhibit bacterial growth, as well as fungus, mold and spores, resulting in a more hygienic environment.

**Abrasion Resistance:** **Resilience<sup>SR</sup>** provides additional wear properties and surface durability to any vinyl or faux leather, thereby increasing the life of the material.

**Resilience<sup>SR</sup>** is not visible, and does not affect the hand of the material. **Resilience<sup>SR</sup>** is engineered to last, even after repeated cleaning and wear. Specify **Resilience<sup>SR</sup>** for the most demanding healthcare and hospitality applications.

## SUPERIOR PERFORMANCE - Key Largo

Superior Abrasion    UV Stability    Improved top-coat formulation, which offers better abrasion resistance, and better resistance to cleaners.

## FEATURES AND BENEFITS OF NANO-TEX<sup>®</sup> - Sequel

### Spill/Stain Prevention

- Fabric aggressively repels liquids (liquid beads and rolls off)
- Liquids can be blotted off the fabric face preventing staining and penetration
- Helps prevent staining of fabric from dirt and spills, including hot coffee, mustard, salad dressing, blood, urine, and iodine
- Can be cleaned with detergents, solvents, or bleach (fabric appropriate)

### Performance

- Maintains natural hand
- Highly breathable
- Permanent

### Environmentally Friendly

- Nano-Tex<sup>®</sup> is an environmentally friendly chemistry that is recyclable

# TECHNICAL INFORMATION

## Affinity Plus Coordinates

\*Certification Marks Owned by ACT.

Pattern 54"	Content and Backing	GREENGUARD Certified	Weight/Linear Yd	Pattern Repeat	Finish	Abrasion Wyzenbeek*	Light Fastness*	Flammability*	Cleaning Code
ALIGN <i>Directional</i> Railroaded	100% Polyester Backing: Acrylic	Gold Certified	11.552 oz.	3.625" H 4.438" V	Stain Repellent	60,000 Double Rubs	40 hours	Cal. 117-2013 NFPA 260 (Equiv. to UFAC)	WS, BC
BATIK <i>Directional</i>	51% Recycled Polyester (35% Post-/16% Pre-Consumer), 49% Polyester Backing: Acrylic	Gold Certified	8.464 oz.	2.5" H 5" V	Stain Repellent	51,000 Double Rubs	40 hours	Cal. 117-2013 NFPA 260 (Equiv. to UFAC)	WS, BC
DURANGO	100% Vinyl Backing: 100% Polyester	Certified	30 oz.	None	PreFixx* - Ink Resistant	1,000,000 Double Rubs	650 hours	See below	WS, BC
KEY LARGO <i>Directional</i>	100% Vinyl Backing: 100% Polyester Knit	Certified	28oz.	Non- Matching	Resilience <sup>SR</sup>	250,000 Double Rubs	650 hours	See below	WS, BC
PATIO <i>Directional</i>	100% Polyester Backing: Acrylic	Gold Certified	11.536 oz.	1.875" H 1.25" V	Stain Repellent	51,000 Double Rubs	40 hours	Cal. 117-2013 NFPA 260 (Equiv. to UFAC)	WS, BC
SEQUEL <i>Directional</i>	100% Polyester Backing: None	Gold Certified	13 oz.	None	Nano-Tex <sup>®</sup>	288,000 Double Rubs	60 hours	Cal. 117-2013 NFPA 260 (Equiv. to UFAC)	WS
SHERLOCK <i>Directional</i>	100% Polyester Backing: Acrylic	Gold Certified	14.624 oz.	0.625" H 1.125" V	Stain Repellent	51,000 Double Rubs	40 hours	Cal. 117-2013 NFPA 260 (Equiv. to UFAC)	WS, BC
VALET <i>Directional</i>	100% Polyester Backing: Acrylic	Gold Certified	14.912 oz.	0.063" H 1.818" V	Stain Repellent	50,000 Double Rubs	40 hours	Cal. 117-2013 NFPA 260 (Equiv. to UFAC)	WS, BC

All patterns may comply with California Technical Bulletin 133 when combined with appropriate components.

### FLAMMABILITY - Durango

California Technical Bulletin 117-2013  
NFPA 260 (Equivalent to UFAC) Class 1  
BIFMA X5.7  
Boston Fire Dept. Code (BFD 1X-1)  
FAA/FAR 25.853(a) and Appendix F Part I (a)(ii)

Passes  
Passes  
Passes  
Passes  
Passes

Fed. Spec. CID A-A-2950/supersedes CCC-A-680A  
FMVSS 302  
NFPA 701  
NY & NJ Port Authority

Passes  
Passes  
Passes  
Passes

### FLAMMABILITY - Key Largo

California Technical Bulletin 117-2013  
NFPA 260 (Equivalent to UFAC) Class 1  
BIFMA CS-191-53, Section 3 & 4

Passes  
Passes  
Passes

FMVSS 302  
IMO FTP 2010 Code MSC.307(88), Part 8, 3.1 & 3.2

Passes  
Passes

### REDUCED ENVIRONMENTAL IMPACT

GREENGUARD Certified and GREENGUARD Gold Certified products are tested for low chemical emissions to standard UL 2818. For more information, visit [UL.com/gg](http://UL.com/gg).

### BATIK

Recycled Content

### KEY LARGO

Phthalates listed on Prop 65 were not used in production.

16P Free - 16 Phthalates were not used in production (BBP, DCHP, DNPP, DPpP, DEP, DNHP, DIBP, DINP, DIDP, DNPP, DIOP, DEHP, DBP, DMP, DNOP, DBZP)

Lead/Heavy Metal Free Tris Free Does not contain conflict minerals

Phthalate and Lead Free to meet CPSC/CPSIA (children's products) environmental and health standards.

### ADDITIONAL INFORMATION

**Custom Capabilities:** All patterns can be custom colored. Minimum yardage applies.

**Memo Samples:** Please keep this card intact. Individual memo samples can be ordered on our website or by contacting customer service.

**Color matching:** Mayer Fabrics always attempts to ship a satisfactory commercial match. Because of industry standard dye lot variation, colors may not match exactly.

**Specifications:** Specifications are correct at the time of printing. Additional specifications are available on our website.

**For information or assistance with products or services, call us at 800.428.4415 or refer to the Mayer Fabrics website.**

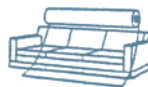
Align, Batik, Patio,  
Sherlock, Valet



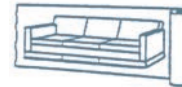
Sequel



Railroaded: This feature allows reduction of seams and enables smoother furniture tailoring.



Fabric "up the roll"  
or "regular" position



Fabric "railroaded" or  
"top selvage" position

We recommend all railroaded patterns should be upholstered as shown on card.

GSA Contract #GS-28F-0022P



MAYERFABRICS

T 317.267.2626 or 800.428.4415 F 317.267.2629 or 877.7SAMPLE

[www.mayerfabrics.com](http://www.mayerfabrics.com)

©2015 Mayer-Paetz, Inc.

APCCD



50215