

BLAST FROM THE PAST COORDINATES

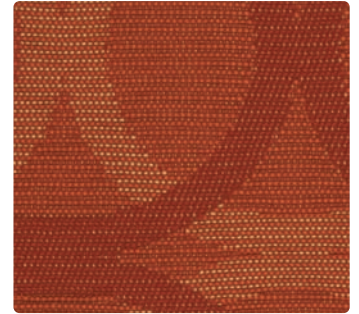




FLOWER POWER
374-002 Gold



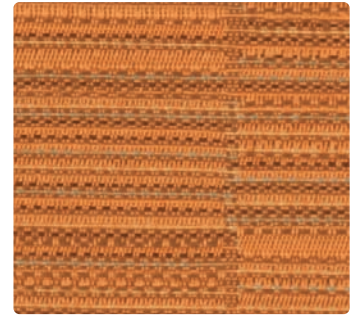
ORBIT
377-000 Terra



HOOPLA
369-009 Coral



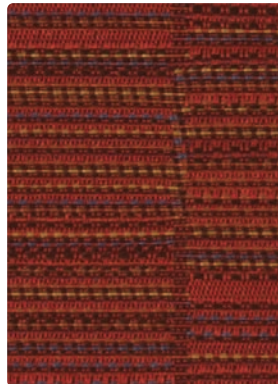
LOCOMOTION
375-001 Coral



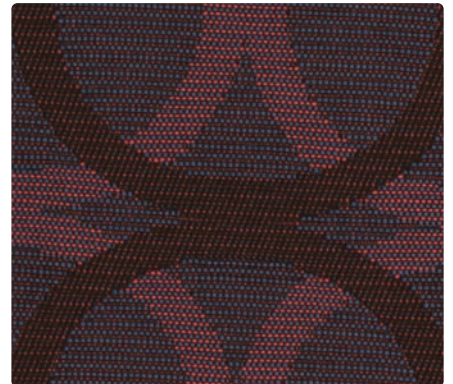
MADRAS
376-009 Clementine



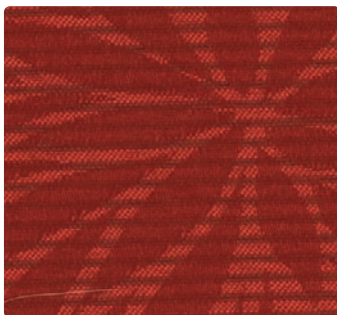
ORBIT
377-001 Mars



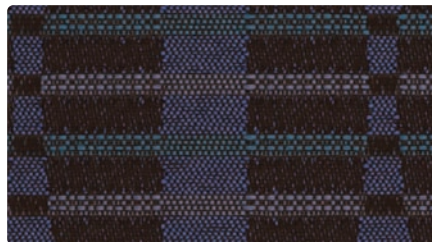
MADRAS
376-001 Sangria



HOOPLA
369-005 Magenta



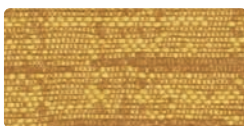
FLOWER POWER
374-001 Crimson



LOCOMOTION
375-005 Aubergine



ORBIT
377-005 Aurora



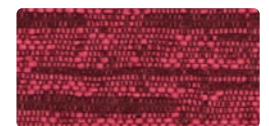
SHANTUNG
373-002 Topaz



SHANTUNG
373-009 Copper



SHANTUNG
373-001 Garnet



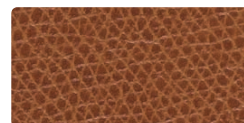
SHANTUNG
373-005 Hibiscus



KOBE
KB-002 Bamboo



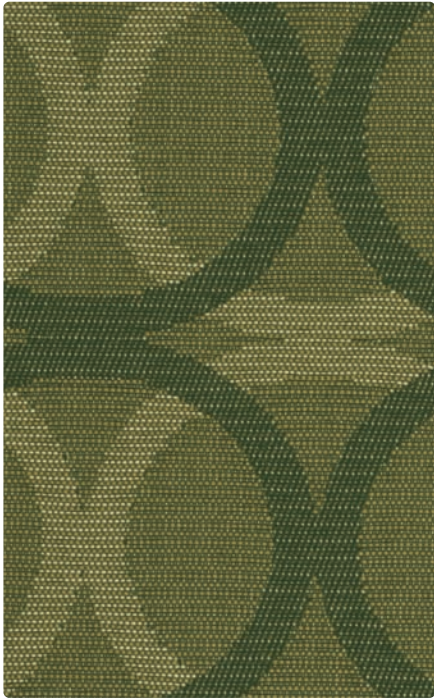
KOBE
KB-019 Buckskin



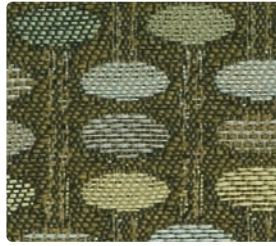
KOBE
KB-009 Sienna



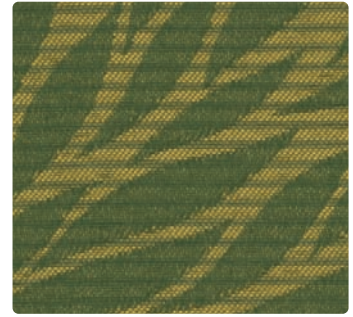
KOBE
KB-001 Maroon



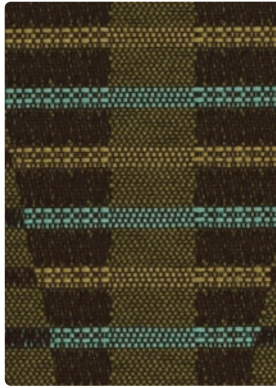
HOOPLA
369-003 Jade



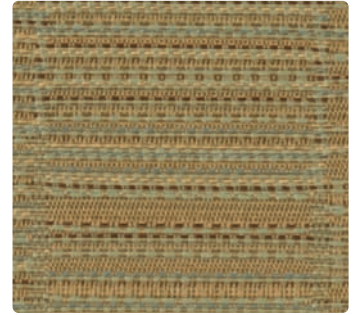
ORBIT
377-003 Foliage



FLOWER POWER
374-003 Jade



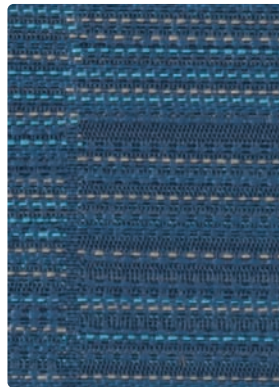
LOCOMOTION
375-003 Earth



MADRAS
376-003 Feldspar



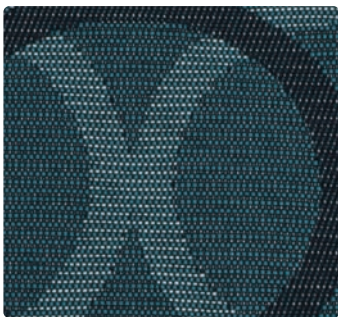
ORBIT
377-014 Jupiter



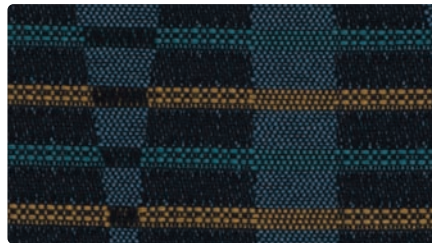
MADRAS
376-004 Royal



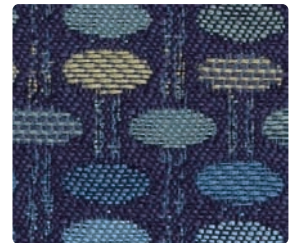
FLOWER POWER
374-014 Sapphire



HOOPLA
369-004 Indigo



LOCOMOTION
375-004 Sky



ORBIT
377-004 Sky



SHANTUNG
373-003 Jade



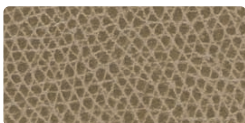
SHANTUNG
373-034 Marina



SHANTUNG
373-014 Cerulean



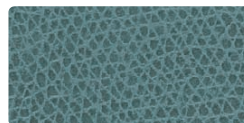
SHANTUNG
373-004 Lapis



KOBE
KB-013 Lichen



KOBE
KB-003 Laurel



KOBE
KB-014 Cyan



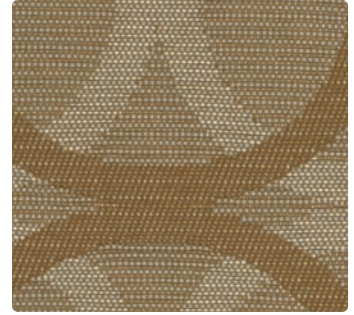
KOBE
KB-004 Indigo



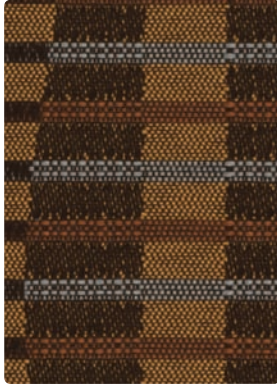
FLOWER POWER
374-007 Taupe



ORBIT
377-007 Moonbeam



HOOPLA
369-017 Taupe



LOCOMOTION
375-000 Bronze



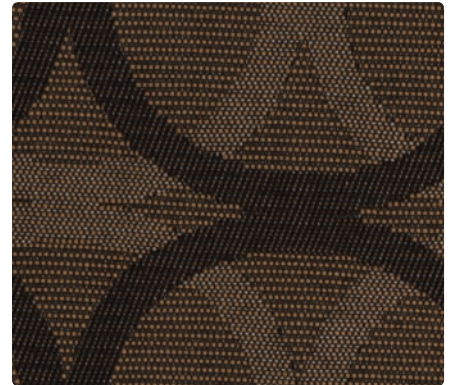
MADRAS
376-007 Parchment



ORBIT
377-026 Mercury



MADRAS
376-000 Bark



HOOPLA
369-000 Granite



FLOWER POWER
374-006 Shadow



LOCOMOTION
375-006 Shadow



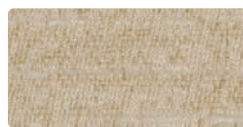
ORBIT
377-006 Obsidian



SHANTUNG
373-007 Parchment



SHANTUNG
373-000 Bark



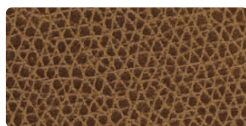
SHANTUNG
373-017 Alabaster



SHANTUNG
373-006 Shadow



KOBE
KB-027 Almond



KOBE
KB-010 Butternut



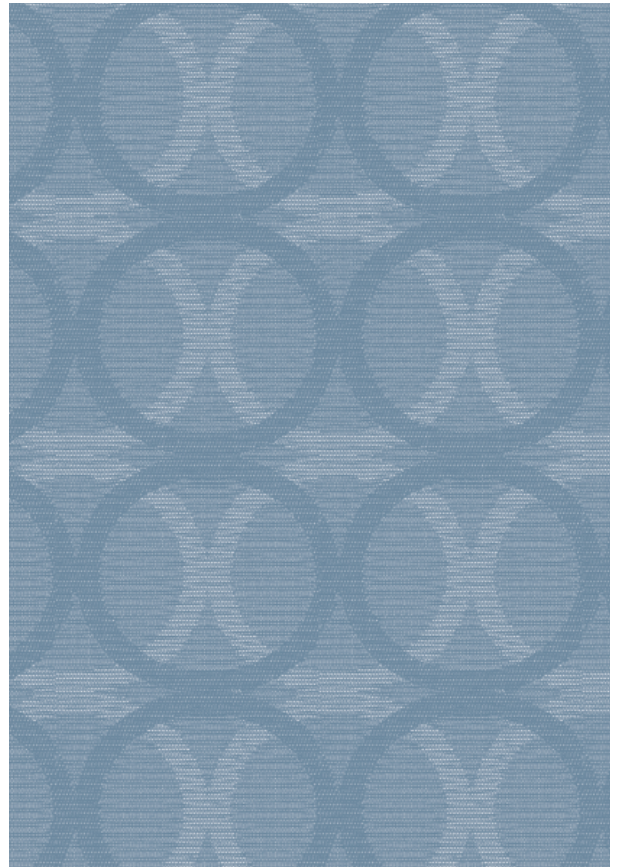
KOBE
KB-026 Pewter



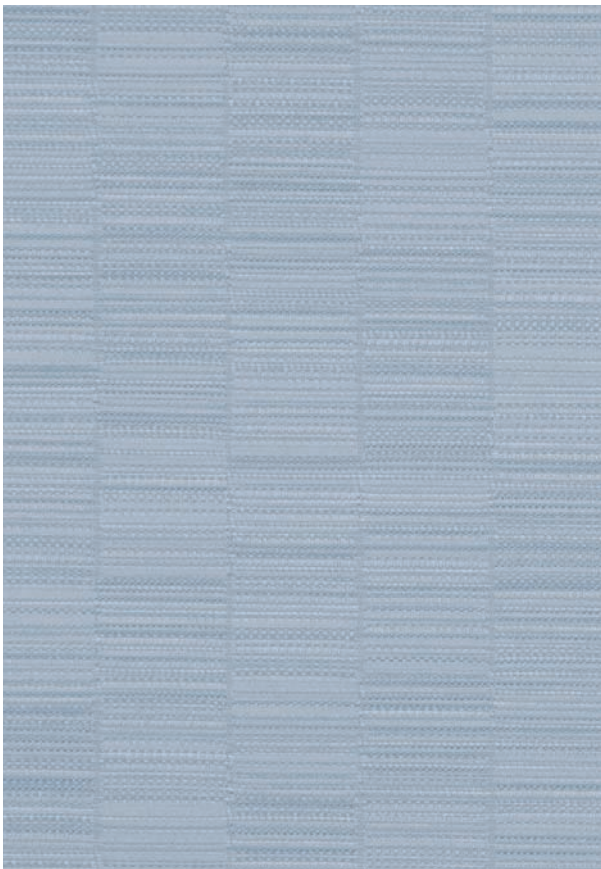
KOBE
KB-006 Ebony



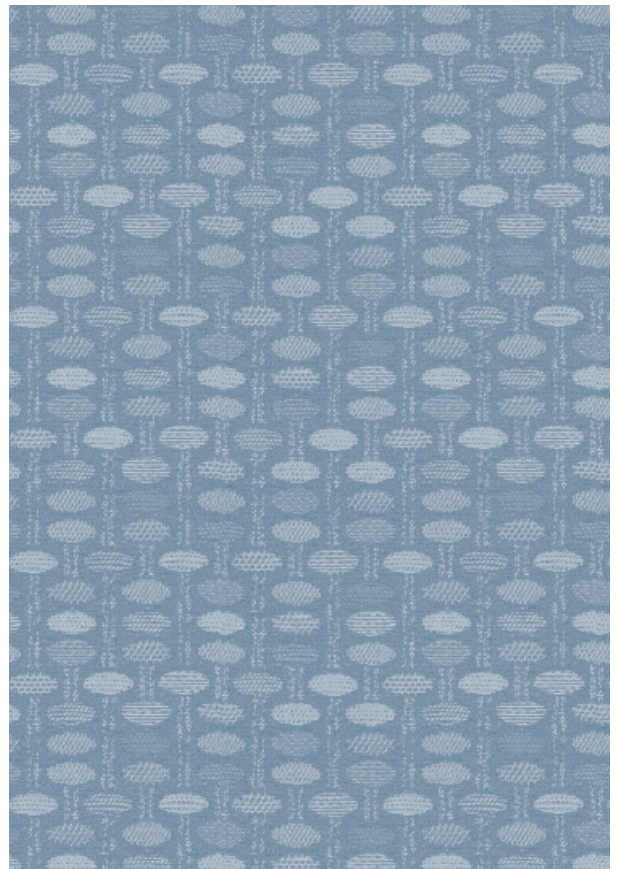
FLOWER POWER - Repeat: 9.6" H, 9.3" V



HOOPLA - Repeat: 2.272" H, 2.212" V



MADRAS - Repeat: 14.3" H, 16.8" V - Random Match



ORBIT - Repeat: 3.5625" H, 2.3" V

TECHNICAL INFORMATION

Blast From The Past Coordinates

* ACT® Registered Certification Marks

Pattern 54"	Content and Backing	Weight/ Linear Yd	Pattern Repeat	Finish	Abrasion Wyzenbeek ^{MA}	Light- Fastness ^{MA}	Flammability ^{MA}	Cleaning Code
FLOWER POWER <i>Directional</i>	100% Pre-Consumer Recycled Polyester	8.9 oz.	9.6" H 9.3" V	None	50,000 Double Rubs	60 hours	Cal. 117-E NFPA 260 (Equiv. to UFAC)	WS
HOOPLA <i>Directional</i>	100% Pre-Consumer Recycled Polyester	9.9 oz.	2.272" H 2.212" V	None	40,000 Double Rubs	60 hours	Cal. 117-E NFPA 260 (Equiv. to UFAC)	WS
KOBE <i>Directional</i>	100% Polyurethane - PVC FREE Knitted Polyester Backing	16.5 oz.	None	None	1,000,000 Double Rubs	40 hours	Cal. 117-E NFPA 260 (Equiv. to UFAC)	WS
LOCOMOTION <i>Directional</i>	100% Pre-Consumer Recycled Polyester	8.7 oz.	1.8" H 5.7" V	None	35,000 Double Rubs	60 hours	Cal. 117-E NFPA 260 (Equiv. to UFAC)	WS
MADRAS <i>Directional</i>	100% Pre-Consumer Recycled Polyester	10.1 oz.	14.3" H 16.8" V Random Match	None	40,000 Double Rubs	60 hours	Cal. 117-E NFPA 260 (Equiv. to UFAC)	WS
ORBIT <i>Directional</i>	100% Pre-Consumer Recycled Polyester	10.8 oz.	3.5625" H 2.3" V	None	40,000 Double Rubs	60 hours	Cal. 117-E NFPA 260 (Equiv. to UFAC)	WS
SHANTUNG <i>Directional</i>	100% Recycled Polyester (65% Pre-/35% Post-Consumer)	10.4 oz.	Non-Matching	None	51,000 Double Rubs	40 hours	Cal. 117-E NFPA 260 (Equiv. to UFAC)	WS

All patterns may comply with California Technical Bulletin 133 when combined with appropriate components.

REDUCED ENVIRONMENTAL IMPACT - Flower Power, Hoopla, Locomotion, Madras, Orbit, Shantung

Recycled Content



GREENGUARD Indoor Air Quality Certification requires products to meet some of the world's toughest chemical emissions standards. GREENGUARD Children & Schools Certification requires those products to meet or exceed additional criteria, including CA Section 01350, to account for the unique health sensitivities of children.



Sustainable. Attainable at Mayer Fabrics.

REDUCED ENVIRONMENTAL IMPACT - Kobe

PVC FREE **Phthalate Free**

CLEANING INFORMATION

WS: Water/Solvent Cleaner – Spot clean, with a mild solvent, an upholstery shampoo, or the foam from a mild detergent. When using a solvent or dry cleaning product, follow instructions carefully and clean only in a well-ventilated room. Avoid any product that contains carbon tetrachloride or other toxic materials. With either method, pretest a small area before proceeding.

For detailed care and cleaning information for each pattern, please refer to the Mayer Fabrics website or contact customer service.

ADDITIONAL INFORMATION

Custom Capabilities: All patterns can be custom colored. Minimum yardage applies.

Memo Samples: Please keep this card intact. Individual memo samples can be ordered on our website or by contacting customer service.

Color matching: Mayer Fabrics always attempts to ship a satisfactory commercial match. Because of industry standard dye lot variation, colors may not match exactly.

Specifications: Specifications are correct at the time of printing. Additional specifications are available on our website.

For information or assistance with products or services, call us at 800.428.4415 or refer to our website, www.mayerfabrics.com.

GSA Contract #GS-28F-0022P



☎ 317.267.2626 or 800.428.4415 ☎ 317.267.2629 or 877.7SAMPLE

www.mayerfabrics.com

©2012 Mayer-Paetz, Inc.

BFTPCCD 50112