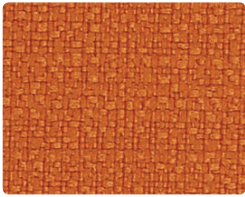
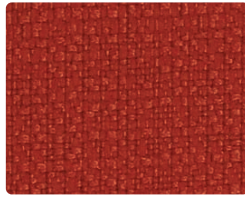


ENSEMBLECOORDINATES

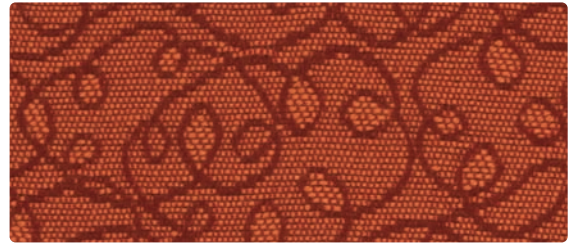




SEQUEL
312-029 Saffron



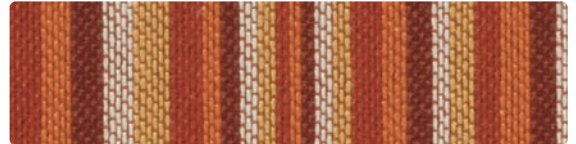
SEQUEL
312-009 Paprika



ARTISTRY
368-009 Tangerine



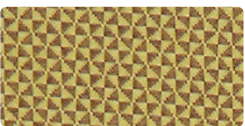
CAVALIER
370-009 Cinnabar



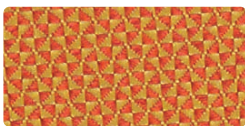
BANNER
372-009 Fiesta



DAPPER
371-009 Fire



QUATTRO
300-002 Wheat



QUATTRO
300-019 Golden Orange



QUATTRO
300-009 Umber



QUATTRO
300-001 Deep Crimson



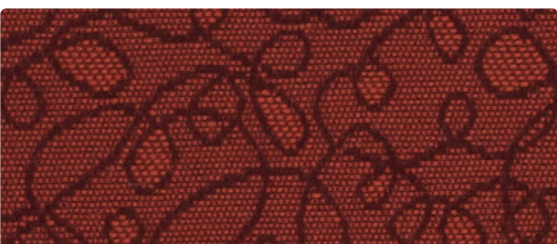
DAPPER
371-001 Ruby



BANNER
372-001 Cranberry



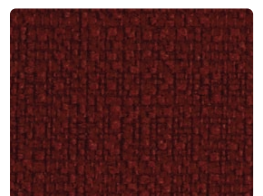
CAVALIER
370-001 Bordeaux



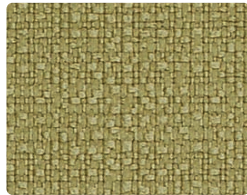
ARTISTRY
368-001 Paprika



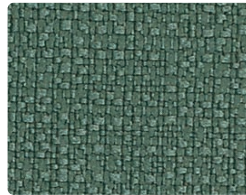
SEQUEL
312-001 Crimson



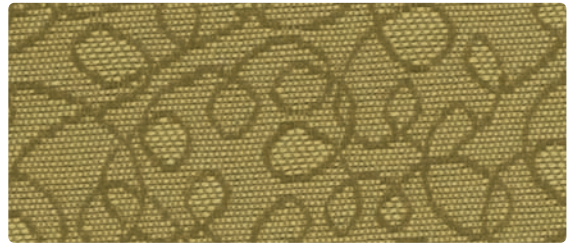
SEQUEL
312-011 Port



SEQUEL
312-013 Wasabi



SEQUEL
312-043 Juniper



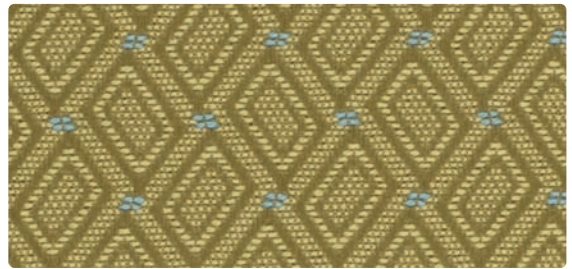
ARTISTRY
368-003 Celadon



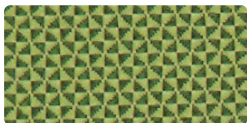
CAVALIER
370-003 Watercress



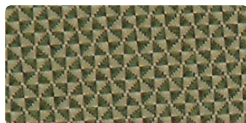
BANNER
372-003 Meadow



DAPPER
371-003 Peridot



QUATTRO
300-003 Spring Green



QUATTRO
300-013 Olive



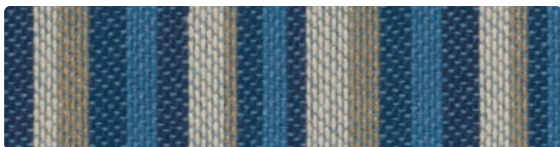
QUATTRO
300-024 Laguna



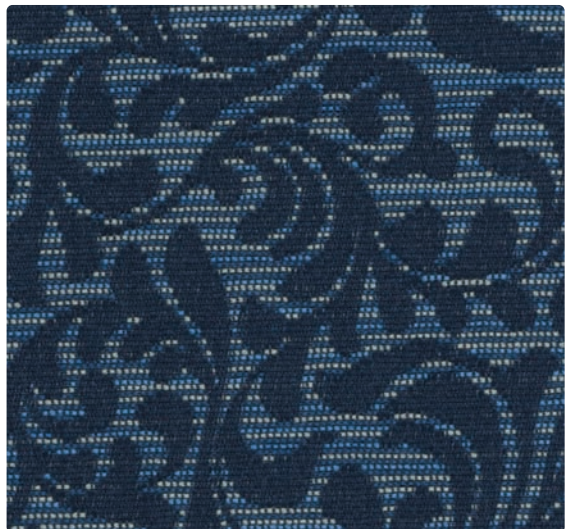
QUATTRO
300-004 Midnight Blue



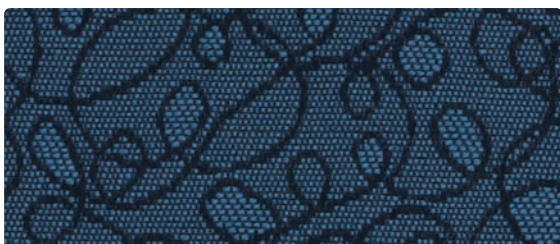
DAPPER
371-004 Lapis



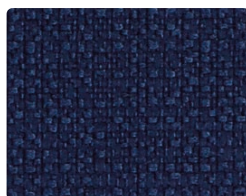
BANNER
372-004 Shoreline



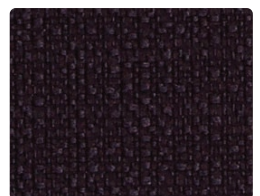
CAVALIER
370-004 Regatta



ARTISTRY
368-004 Atlantic



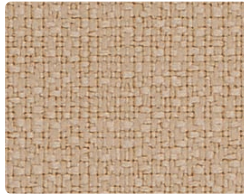
SEQUEL
312-004 Royal



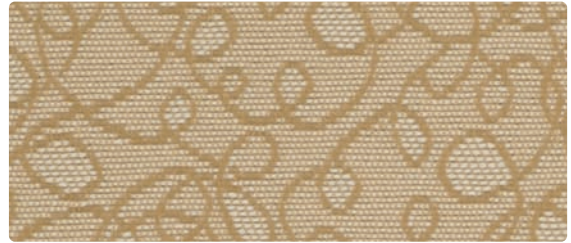
SEQUEL
312-014 Navy



SEQUEL
312-007 Biscuit



SEQUEL
312-027 Parchment



ARTISTRY
368-007 Parchment



CAVALIER
370-007 Sandstone



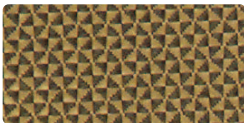
BANNER
372-007 Buttercream



DAPPER
371-007 Quartz



QUATTRO
300-007 Chalk



QUATTRO
300-000 Honeycomb



QUATTRO
300-016 Khaki



QUATTRO
300-006 Granite



DAPPER
371-006 Obsidian



BANNER
372-006 Granite



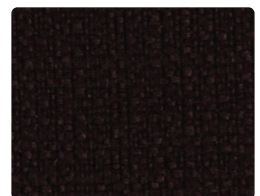
CAVALIER
370-006 Ebony



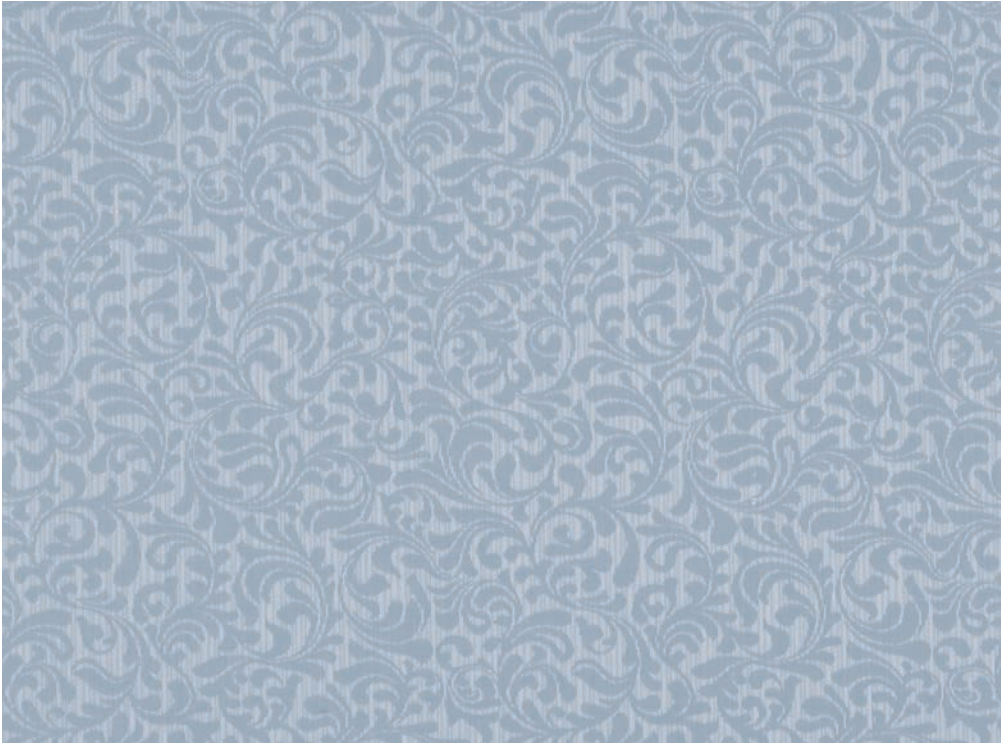
ARTISTRY
368-006 Graphite



SEQUEL
312-016 Sandstone



SEQUEL
312-006 Ebony







CAVALIER - Repeat: 13.75" H, 7.6" V

TECHNICAL INFORMATION

Ensemble Coordinates

* ACT® Registered Certification Marks

Pattern 54"	Content and Backing		Weight/ Linear Yd	Pattern Repeat	Finish	Abrasion  Wyzenbeek	Light- Fastness 	Flammability 	Cleaning Code
ARTISTRY <i>Directional</i>	100% Polyester Backing: SBR Latex	Yes	10.8 oz.	3.5" H 4.8" V	Stain Repellent	60,000 Double Rubs	40 hours	Cal. 117-E NFPA 260 (Equiv. to UFAC)	S
BANNER <i>Directional Railroaded</i>	100% Polyester Backing: SBR Latex	Yes	10.8 oz.	7.6" H 0" V	Stain Repellent	50,000 Double Rubs	40 hours	Cal. 117-E NFPA 260 (Equiv. to UFAC)	S
CAVALIER <i>Directional</i>	100% Polyester Backing: SBR Latex	Yes	11.184 oz.	13.75" H 7.6" V	Stain Repellent	50,000 Double Rubs	40 hours	Cal. 117-E NFPA 260 (Equiv. to UFAC)	S
DAPPER <i>Directional</i>	100% Polyester Backing: SBR Latex	Yes	11.424 oz.	.75" H 2.5" V	Stain Repellent	50,000 Double Rubs	40 hours	Cal. 117-E NFPA 260 (Equiv. to UFAC)	S
QUATTRO <i>Directional</i>	100% Polyester Backing: Acrylic	Yes	13.4 oz.	Non- Matching	Stain Repellent	237,000 Double Rubs	60 hours	Cal. 117-E NFPA 260 (Equiv. to UFAC) ASTM E84 Class 1 or A (Adhered) IMO A.652 (16) 8.2	S
SEQUEL <i>Directional</i>	100% Polyester Backing: None	Yes	11.6 oz.	None	Nano-Tex®	288,000 Double Rubs	60 hours	Cal. 117-E NFPA 260 (Equiv. to UFAC)	S

All patterns may comply with California Technical Bulletin 133 when combined with appropriate components.

REDUCED ENVIRONMENTAL IMPACT



GREENGUARD Indoor Air Quality Certification requires products to meet some of the world's toughest chemical emissions standards. GREENGUARD Children & Schools Certification requires those products to meet or exceed additional criteria, including CA Section 01350, to account for the unique health sensitivities of children.

FEATURES AND BENEFITS OF NANO-TEX® - Sequel

Spill/Stain Prevention

- Fabric aggressively repels liquids (liquid beads and rolls off)
- Liquids can be blotted off the fabric face preventing staining and penetration
- Helps prevent staining of fabric from dirt and spills, including hot coffee, mustard, salad dressing, blood, urine, and iodine
- Can be cleaned with detergents, solvents, or bleach (fabric appropriate)

Performance

- Maintains natural hand
- Highly breathable
- Permanent

Environmentally Friendly

- Nano-Tex® is an environmentally friendly chemistry that is recyclable
- MBDC Certified

CLEANING INFORMATION

S: Solvent – Spot clean using a mild water-free solvent or dry cleaning product. Clean only in a well-ventilated room and avoid any product containing carbon tetrachloride or other toxic materials. Pretest a small area before proceeding.

ADDITIONAL INFORMATION

Additional colors are available. Please contact Mayer Fabrics for more information.

Custom Capabilities: All patterns can be custom colored. Minimum yardage applies.

Memo Samples: Please keep this card intact. Individual memo samples can be ordered on our website or by contacting customer service.

Color matching: Mayer Fabrics always attempts to ship a satisfactory commercial match. Because of industry standard dye lot variation, colors may not match exactly.

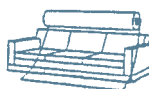
Specifications: Specifications are correct at the time of printing. Additional specifications are available on our website.

For information or assistance with products or services, call us at 800.428.4415 or refer to our website, www.mayerfabrics.com.

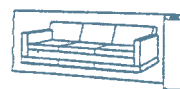


NANOTEX
Fabric to the Next®

Railroaded: This feature allows reduction of seams and enables smoother furniture tailoring.



Fabric "up the roll" or "regular" position



Fabric "railroaded" or "top selvage" position

All railroaded patterns should be upholstered as shown on card.

GSA Contract #GS-28F-0022P



☎ 317.267.2626 or 800.428.4415 ☎ 317.267.2629 or 877.7SAMPLE

www.mayerfabrics.com

©2012 Mayer-Paet, Inc.

ENSCCD  R50212