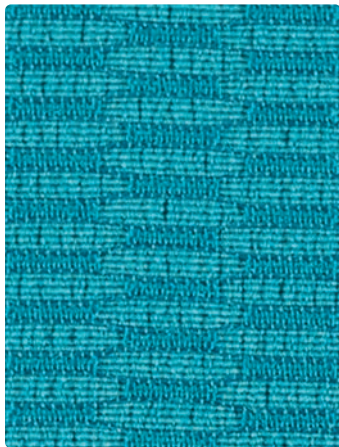


FINER POINTS PLUS COORDINATES

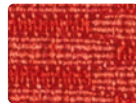


MAYERFABRICS

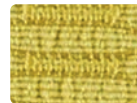
ECHO



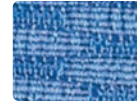
388-034 Turquoise



388-009
Blaze



388-002
Chrome Yellow



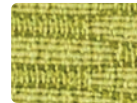
388-014
Cerulean



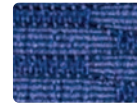
388-017
French Beige



388-001
Vermillion



388-013
Apple Green



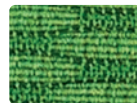
388-004
Cobalt



388-010
Smokey Taupe



388-005
Aubergine



388-003
Kelly Green



388-000
Sable



388-006
Ebony

MEANDER



419-014 Surf



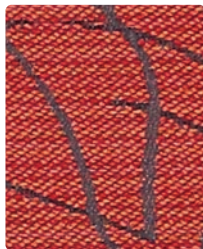
419-009 Blaze



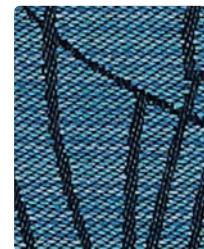
419-003 Pistachio



419-000 Bark



419-001 Pomegranate



419-004 Bluebell

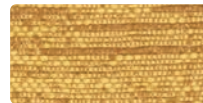


419-006 Basalt

SHANTUNG



373-014 Cerulean



373-002 Topaz



373-003 Jade



373-017 Alabaster



373-009 Copper



373-034 Marina



373-000 Bark



373-001 Garnet



373-004 Lapis



373-006 Shadow

PHOENIX



PH-032 Straw



PH-009 Terra Cotta



PH-039 Tangelo



PH-001 Berry



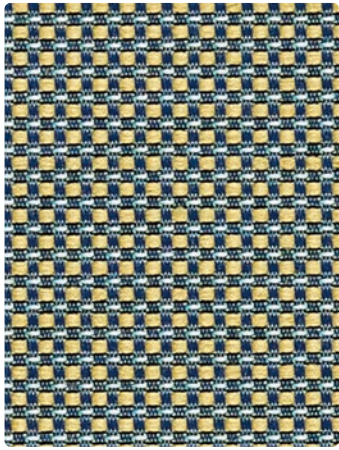
PH-011 Brandy



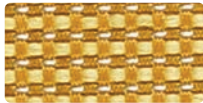
PH-005 Hydrangea

Additional colors are available. Please refer to the Mayer Fabrics website.

DAZZLE



319-024 Aquamarine



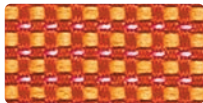
319-002 Sunflower



319-003 Limelight



319-007 Parchment



319-009 Melon



319-014 Azure



319-010 Java



319-001 Ruby



319-004 Sapphire



319-006 Titanium

REVERB



421-024 Aquatic



421-009 Tangelo



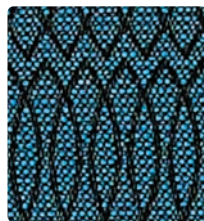
421-003 Pistachio



421-007 Taupe



421-001 Garnet

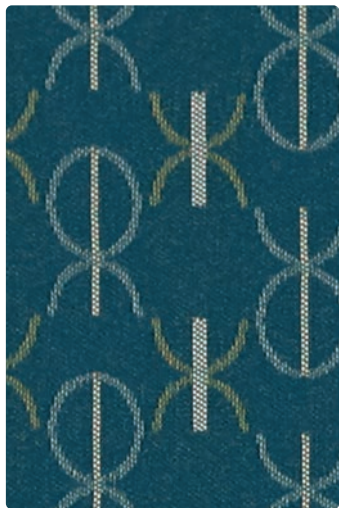


421-004 Marine



421-000 Granite

MONOGRAM



381-014 Cerulean



381-002 Butterscotch



381-003 Emerald



381-007 Opal



381-001 Rouge



381-004 Indigo



381-000 Bark

PHOENIX



PH-043 Lime



PH-003 Palm



PH-054 Capri



PH-034 Marina



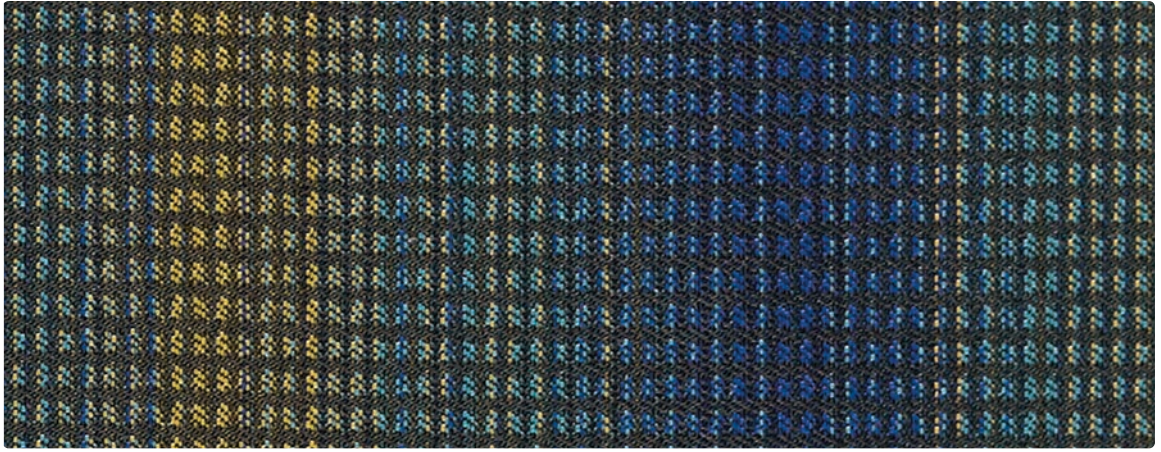
PH-044 Sky



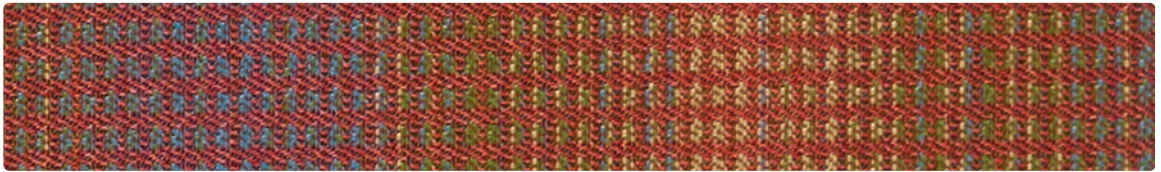
PH-004 Admiral

Additional colors are available. Please refer to the Mayer Fabrics website.

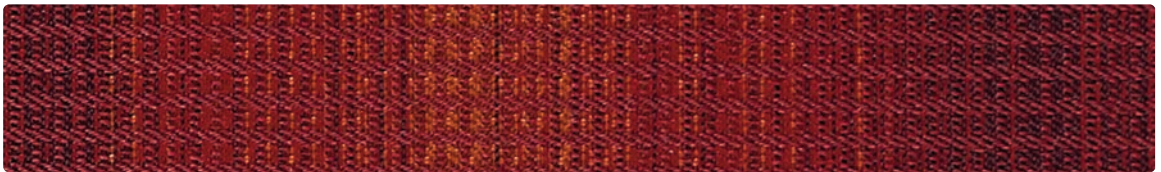
INTRIGUE



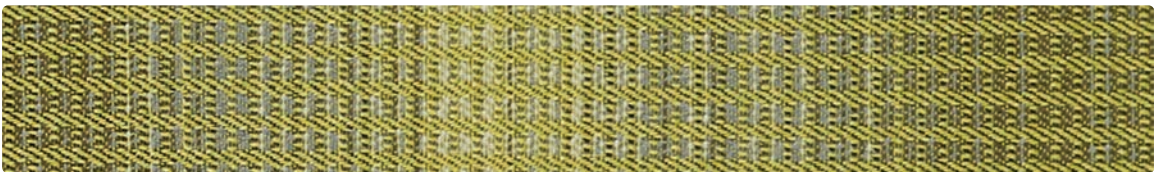
382-014 Sky



382-009 Fiesta



382-001 Sunset



382-003 Celadon



382-000 Cobblestone



382-006 Dusk

PHOENIX



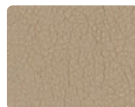
PH-007 Natural



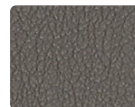
PH-027 Saddle



PH-000 Fudge



PH-020 Clove

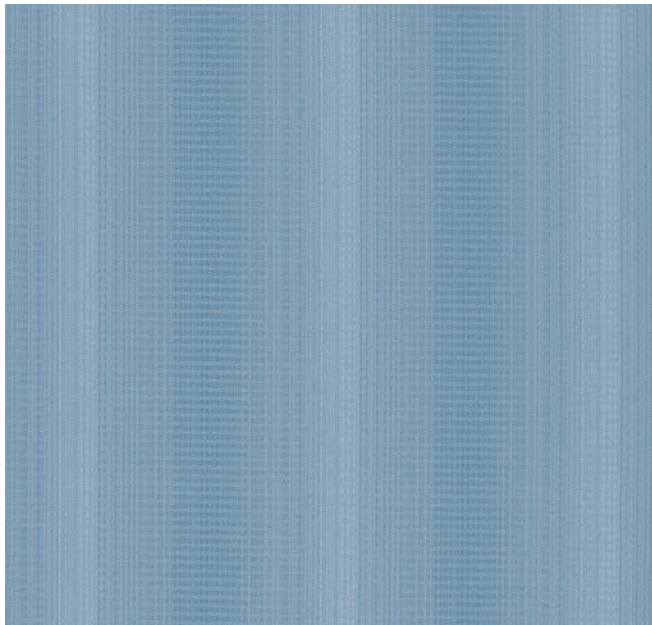


PH-026 Charcoal

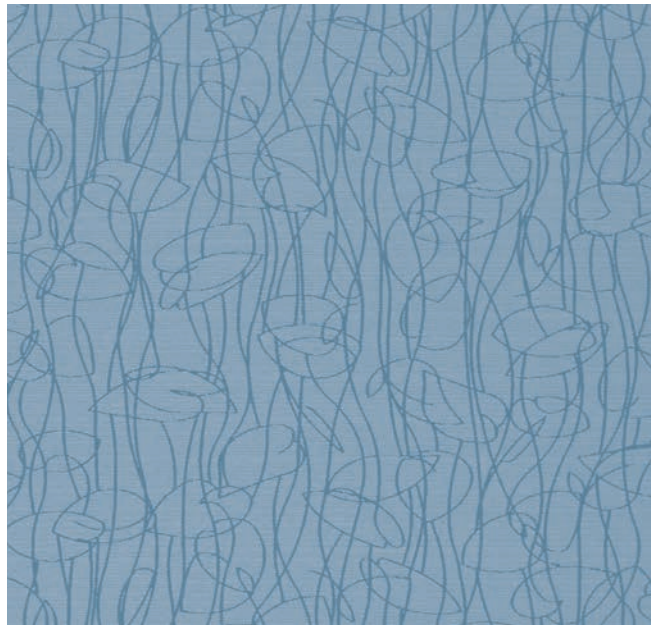


PH-006 Lava

Additional colors are available. Please refer to the Mayer Fabrics website.



INTRIGUE - Repeat: 5.375" H, 0.1875" V



MEANDER - Repeat: 14.3" H, 9.5" V Random Match

TECHNICAL INFORMATION

Finer Points Plus Coordinates Card

*Certification Marks owned by ACT®

Pattern 54"	Fiber Content and Backing	GREENGUARD Certified	Weight/ Linear Yd	Pattern Repeat	Finish	Abrasion* Wyzenbeek	Light- Fastness*	Flammability*	Cleaning Code
DAZZLE <i>Directional</i>	95% Recycled Polyester (89% Post-/6% Pre-Consumer), 5% Polyester Backing: Acrylic	Gold Certified	11.25 oz.	0.14" H 0.13" V	Stain Repellent	80,000 Double Rubs	60 hours	Cal. 117-2013 NFPA 260/UFAC ASTM E84 Class 1 or A	WS
ECHO <i>Directional</i>	96% Recycled Polyester (82% Post-/14% Pre-Consumer), 4% Polyester Backing: None	Gold Certified	14.83 oz.	0.8125" H 0.25" V	None	70,000 Double Rubs	60 hours	Cal. 117-2013 NFPA 260/UFAC ASTM E84 Class 1 or A	WS
INTRIGUE <i>Directional Railroaded</i>	32% Post-Consumer Recycled Polyester, 68% Polyester Backing: None	Gold Certified	11 oz.	5.375" H 0.1875" V	None	175,000 Double Rubs	60 hours	Cal. 117-2013 NFPA 260/UFAC	WS
MEANDER <i>Directional</i>	100% Recycled Polyester (52% Pre-/48% Repreve Post-Consumer) Backing: None	Gold Certified	9.6 oz.	14.3" H 9.5" V Random Match	None	75,000 Double Rubs	60 hours	Cal. 117-2013 NFPA 260/UFAC ASTM E84 Class 1 or A	WS
MONOGRAM <i>Directional Railroaded</i>	100% Eco Intelligent® Polyester - ANTIMONY FREE Backing: None	Gold Certified	10.22 oz.	1.1875" H 2.125" V	None	100,000 Double Rubs	60 hours	Cal. 117-2013 NFPA 260/UFAC	WS
PHOENIX	100% Polyurethane - PVC FREE Backing: Brushed Woven Polyester/Cotton	Certified	21 oz	None	None	1,002,000 Double Rubs	400 hours	Cal. 117-2013 NFPA 260/UFAC ASTM E84 Class 1 or A FMVSS 302 IMO FTP 2010, 3.1	See Mayer Website
REVERB <i>Directional</i>	100% Recycled Polyester (52% Repreve Post-/48% Pre-Consumer) Backing: None	Gold Certified	9.3 oz.	0.375" H 1.875" V	None	100,000 Double Rubs	60 hours	Cal. 117-2013 NFPA 260/UFAC ASTM E84 Class 1 or A	WS
SHANTUNG <i>Directional</i>	100% Recycled Polyester (65% Pre-/35% Post-Consumer) Backing: Polyester	Gold Certified	10.688 oz.	Non-Matching	None	51,000 Double Rubs	40 hours	Cal. 117-2013 NFPA 260/UFAC	WS

REDUCED ENVIRONMENTAL IMPACT

GREENGUARD Certified and GREENGUARD Gold Certified products are tested for low chemical emissions to standard UL 2818. UL.com/gg

ADDITIONAL INFORMATION

Cal TB 133: All patterns may comply with California Technical Bulletin 133 when combined with appropriate components.

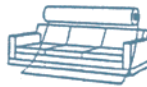
Abrasion: Multiple factors affect fabric durability and appearance retention, including end-user application and proper maintenance. Wyzenbeek results above 100,000 double rubs have not been shown to be a reliable indicator of increased fabric lifespan.

Custom Capabilities: All patterns can be custom colored. Minimum yardage applies.

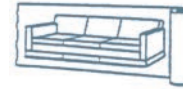
Digital Swatch Card Color Matching: Due to color variations on different monitors and color printers, actual swatch colors may vary slightly. Please request a memo sample from Mayer Fabrics to ensure proper color representation.

Specifications: Specifications are correct at the time of printing. Current detailed specifications are available on our website.

Railroaded: This feature allows reduction of seams and enables smoother furniture tailoring.



Fabric "up the roll" or "regular" position




Fabric "railroaded" or "top selvage" position

We recommend all railroaded patterns should be upholstered as shown on card.



MAYERFABRICS

GSA Contract #GS-28F-0022P

FPPCCD 

50415

T 317.267.2626 or 800.428.4415 F 317.267.2629 or 877.7SAMPLE

www.mayerfabrics.com

©2015 Mayer-Paetz, Inc.