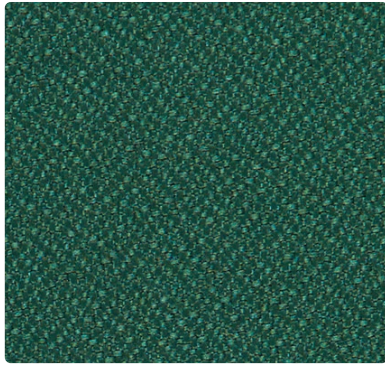


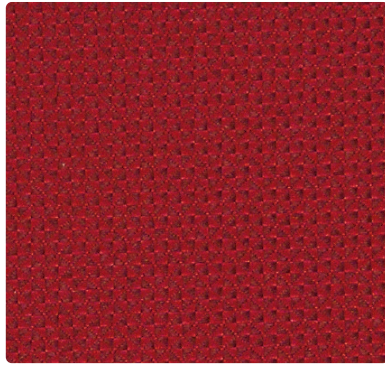
# FORTE

# QUATTRO

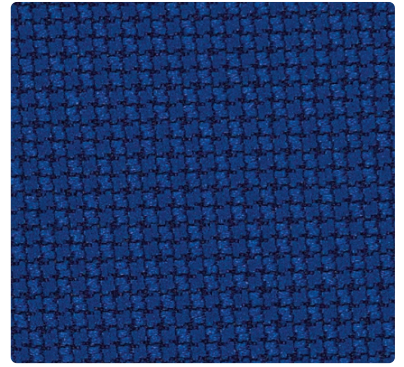
# CROSS CHECK



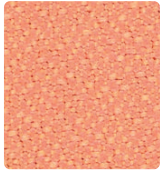
298-003  
Chive



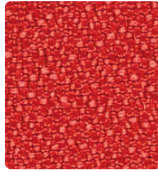
300-001  
Deep Crimson



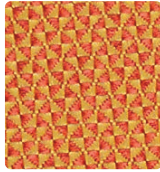
299-024  
Blue Ribbon



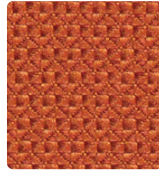
298-019  
Squash



298-009  
Pimento



300-019  
Golden Orange



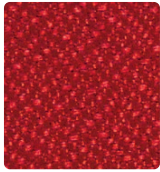
300-009  
Umber



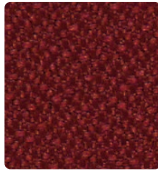
299-019  
Demerera



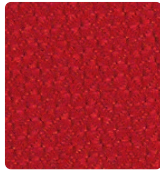
299-021  
Red Baron



298-001  
Rouge



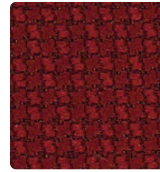
298-011  
Port



300-011  
Hibiscus



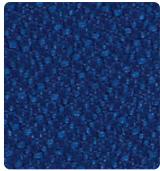
300-005  
Dark Orchid



299-011  
Vermillion



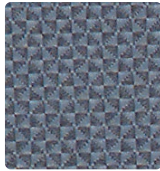
299-005  
Wisteria



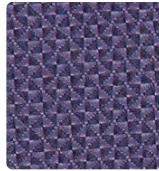
298-014  
Blue Ray



298-004  
Cadet



300-024  
Laguna



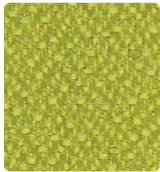
300-004  
Midnight Blue



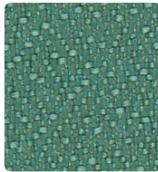
299-024  
Blue Ribbon



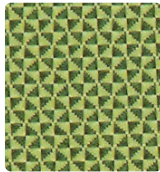
299-014  
Imperial



298-013  
Avocado



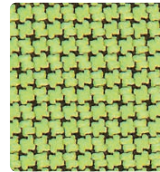
298-033  
Fairway



300-003  
Spring Green



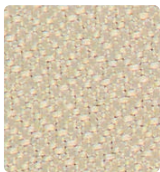
300-013  
Olive



299-003  
Lime



299-023  
Aquamarine



298-017  
Pumice



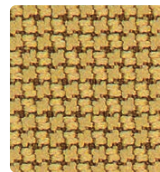
298-000  
Fudge



300-007  
Chalk



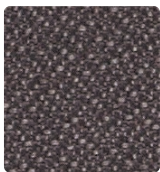
300-000  
Honeycomb



299-007  
Saddle Tan



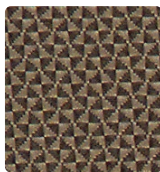
299-000  
Otter



298-036  
Char



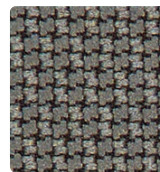
298-006  
Tuxedo



300-016  
Khaki



300-006  
Granite



299-026  
Platinum



299-006  
Slate Black

# TECHNICAL INFORMATION

Cross Check, Forte, Quattro

\* ACT\* Registered Certification Marks

Pattern 54"	Fiber Content	GREENGUARD Certified	Weight / Linear Yd.	Pattern Repeat	Finish	Surface Abrasion Wyzenbeek $\Delta$ *	Light-*** Fastness	Flammability $\phi$ *	Cleaning Code
CROSS CHECK	100% Polyester Acrylic Backing	Certified Gold	10.94 oz.	Non-matching	Stain Repellent	258,000 Double Rubs	40 hours	Cal. 117-E NFPA 260 (Equiv. to UFAC) ASTM E84 Class 2 or B	S
FORTE	100% Polyester Acrylic Backing	Certified Gold	14.2 oz.	None	Stain Repellent	183,000 Double Rubs	40 hours	Cal. 117-E NFPA 260 (Equiv. to UFAC) ASTM E84 Class 2 or B	S
QUATTRO <i>Directional</i>	100% Polyester Acrylic Backing	Certified Gold	13.4 oz.	Non-matching	Stain Repellent	237,000 Double Rubs	40 hours	Cal. 117-E NFPA 260 (Equiv. to UFAC) ASTM 84 Class 1 or A IMO A.652(16) 8.2	S

May comply with the California Technical Bulletin 133 when combined with appropriate components.

## REDUCED ENVIRONMENTAL IMPACT

GREENGUARD Certified products are tested for low chemical emissions to standard UL 2818. For more information, visit [UL.com/gg](http://UL.com/gg).

## CLEANING INFORMATION

S: Solvent – Spot clean using a mild water-free solvent or dry cleaning product. Clean only in a well-ventilated room and avoid any product containing carbon tetrachloride or other toxic materials. Pretest a small area before proceeding.

## ADDITIONAL INFORMATION

Additional colors are available. Please contact Mayer Fabrics for more information.

**Custom Capabilities:** All patterns can be custom colored. Minimum yardage applies.

**Memo Samples:** Please keep this card intact. Memo samples can be ordered on our web site or by contacting customer service.

**Color Matching:** Mayer Fabrics always attempts to ship a satisfactory commercial match. Because of industry standard dye lot variation, colors may not match exactly.

**Specifications:** Specifications are correct at the time of printing. Current specifications are available on our website.

**For information or assistance with products or services, call us at 800.428.4415 or refer to our web site, [www.mayerfabrics.com](http://www.mayerfabrics.com).**



Water and Stain  
Repellent Finish



MAYERFABRICS

GSA Contract #GS-28F-0022P

T 317.267.2626 or 800.428.4415 F 317.267.2629 or 877.7SAMPLE www.mayerfabrics.com FQCCCD  RX1013

©2006 Mayer-Paetz, Inc.