

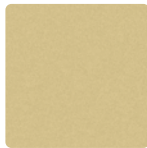
IMAGINE SUNBRELLA CONTRACT PLUSCOORDINATES



MAYERFABRICS



SLICK
SL-002 Lemon



SLICK
SL-032 Wheat



SLICK
SL-009 Bittersweet



SLICK
SL-019 Paprika



SLICK
SL-001 Tomato



SLICK
SL-008 Claret



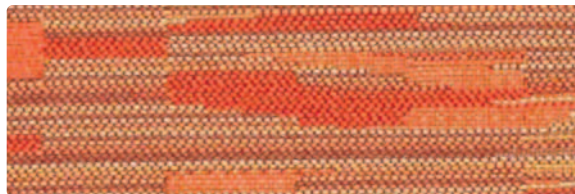
BOTEH
414-009 Orange Blaze



COLLAGE
417-000 Bronze



MANDALA
418-001 Crimson



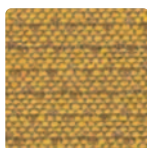
COLLAGE
417-009 Tiger Lily



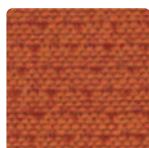
INFINITY
415-009 Flamingo



SOLEIL
416-002 Jonquil



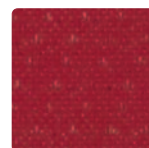
SOLEIL
416-012 Dijon



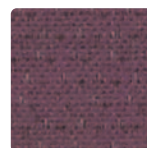
SOLEIL
416-019 Tangerine



SOLEIL
416-009 Coral



SOLEIL
416-001 Crimson



SOLEIL
416-005 Orchid



SLICK
SL-023 Lime



SLICK
SL-013 Parsley



SLICK
SL-043 Calypso



SLICK
SL-054 Seafoam



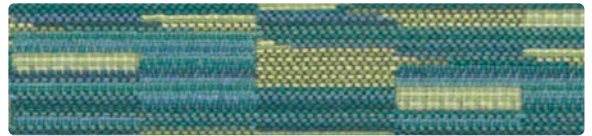
SLICK
SL-034 Bluejay



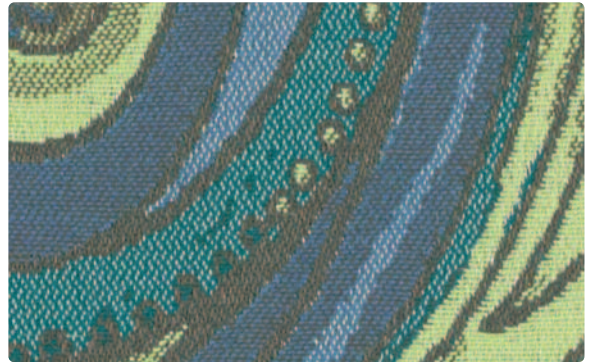
SLICK
SL-004 Sapphire



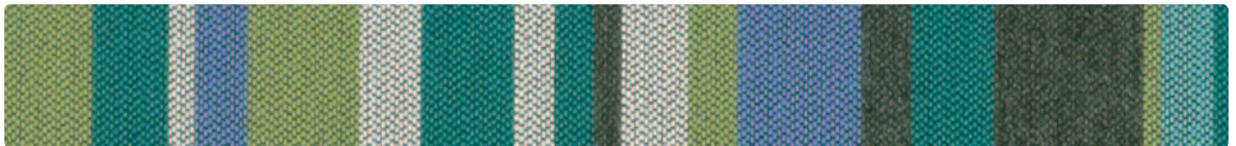
MANDALA
418-003 Opal



COLLAGE
417-013 Emerald



BOTEH
414-014 Caribbean



INFINITY
415-014 Peacock



COLLAGE
417-004 Cobalt



MANDALA
418-004 Lapis



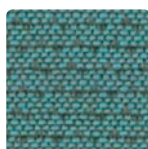
BOTEH
414-004 Cerulean



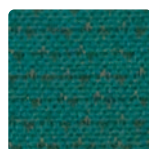
SOLEIL
416-013 Wasabi



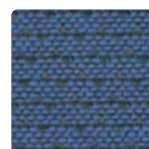
SOLEIL
416-003 Jade



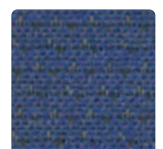
SOLEIL
416-024 Turquoise



SOLEIL
416-023 Teal



SOLEIL
416-014 Cerulean



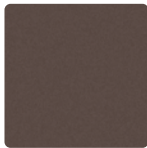
SOLEIL
416-004 Indigo



SLICK
SL-027 Cream



SLICK
SL-017 Sepia



SLICK
SL-000 Espresso



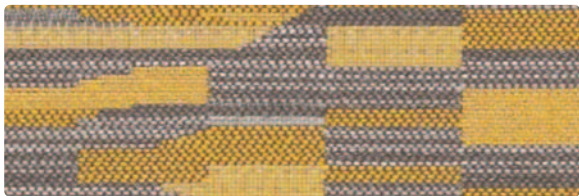
SLICK
SL-007 Taupe



SLICK
SL-037 Cobblestone



SLICK
SL-006 Jet



COLLAGE
417-002 Goldenrod



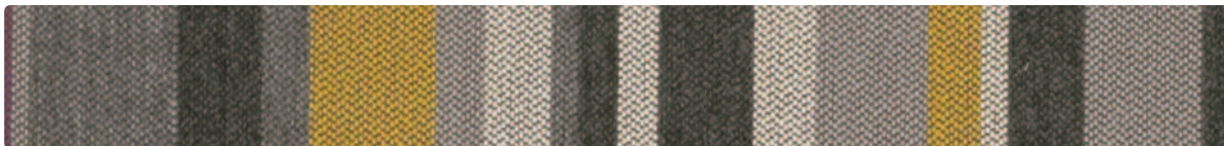
BOTEH
414-000 Bronze



COLLAGE
417-006 Granite



MANDALA
418-006 Onyx



INFINITY
415-016 Quartzite



SOLEIL
416-017 Parchment



SOLEIL
416-010 Bronze



SOLEIL
416-000 Espresso



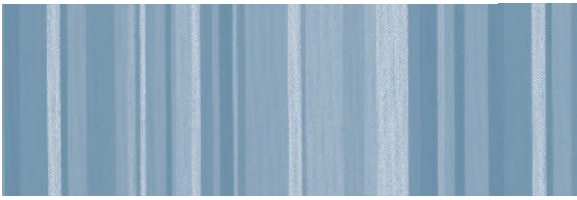
SOLEIL
416-026 Silver



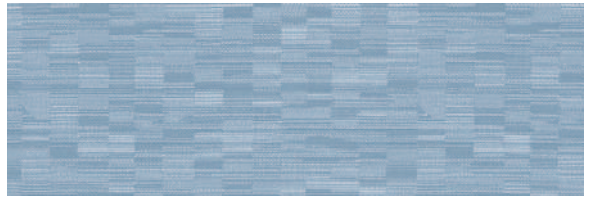
SOLEIL
416-016 Charcoal



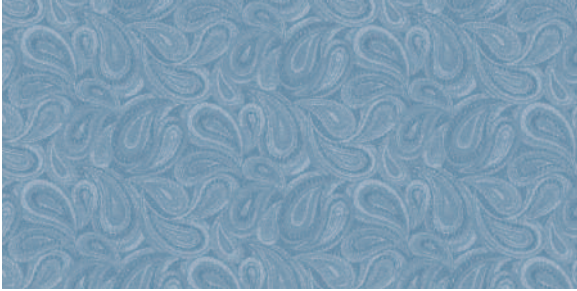
SOLEIL
416-006 Onyx



INFINITY - Approx. Repeat: 20" H, 0" V



COLLAGE - Approx. Repeat: 9.25" H, 13" V Random Match



BOTEH - Approx. Repeat: 28" H, 13.7" V



MANDALA - Approx. Repeat: 14" H, 12.75" V

SUPERIOR PERFORMANCE - Boteh, Collage, Infinity, Mandala, Soleil

100% Solution Dyed Fibers Meets or exceeds heavy duty upholstery ACT standards
 Mold and Mildew Resistant Enduring color - color stays strong and vibrant even when exposed to sunlight and cleaning with bleach

SUPERIOR PERFORMANCE - Slick

Superior Abrasion UV Stability

SPECIFIC TREATMENT - Boteh, Collage, Infinity, Mandala, Soleil

Defiance Antimicrobial Treatment inhibits the growth of bacteria, mold, fungus and mildew
 Antibacterial/Antifungal Protection Anti-Stain Finish/Easily Cleaned Bleach Cleanable Fungus & Mildew Resistant
 Superior Disinfectant Resistance Soil & Stain Resistant All Colors UV Stabilized Pigments

SPECIFIC TREATMENT - Slick

Ag SILVERGUARD[®] SILVER ION TECHNOLOGY Slick is treated with the most advanced silver ion technology, **SILVERGUARD[®]**, providing a natural germ-fighting defense to help safeguard the consumer against odor and stain causing bacteria. When combined with **PERMABLOK[®]**, Spradling's patented stain-fighting and abrasion-resistant treatment, also featured in Slick, **SILVERGUARD[®]** delivers the ultimate performance solution.

PBG+ PERMABLOK[®] is a proven vinyl protective coating that's engineered through a synergistic blend of **PERMABLOK[®]** and **PERMAGUARD[®]** to create the ultimate stain resistant barrier. It is a tough effective barrier against germs, stains and surface abrasion, three of the biggest problems encountered in today's commercial environments.

PBG+ PERMABLOK[®] Protective Finish Anti-fungal/Anti-Bacterial Protection Anti-Stain Finish/Easily Cleaned Anti-Static Slip Finish Mildew Resistant
 Oil Resistant Scratch Resistant Sulfide Stain Resistant/All Colors Superior Disinfectant Resistance Urine Stain Resistant UV Stabilized Pigments

The advanced technology **PBG+ PERMABLOK[®]** combined with **SILVERGUARD[®]** antibacterial finish, flame-retardant properties, and other enhanced performance characteristics also formulated in Slick will safeguard your investment and extend the life of the product.

CARE AND CLEANING INFORMATION - Boteh, Collage, Infinity, Mandala, Soleil

WS: Water/Solvent Cleaner – Spot clean, with a mild solvent, an upholstery shampoo, or the foam from a mild detergent. When using a solvent or dry cleaning product, follow instructions carefully and clean only in a well-ventilated room. Avoid any product that contains carbon tetrachloride or other toxic materials. With either method, pretest a small area before proceeding. Always rinse promptly with clean water.

BC: Bleach Cleanable – 1 part bleach, 4 parts water = 20% bleach, 80% water solution. Always rinse promptly with clean water after applying the bleach solution.

Most germicide and solvent stains easily removed. Cleanable with any cleaning agent with a PH<12.

CARE AND CLEANING INFORMATION - Slick

Remove stains with one of the following steps:

Step 1 (eye shadow, mascara, grease, black felt tip pen, crayon, chocolate, suntan lotion, hair and body oils*): Remove excess spill with a damp cloth. Clean with a 1:1 mix of Ivory[®] liquid soap and water. Next, rinse with clean water and dry.

Step 2 (red lipstick): Use a straight application of concentrated cleaners such as Formula 409[®] or Fantastik[®] spray cleaner. Wipe with a clean cloth, rinse with clean water, and dry.

Step 3 (blood, urine, feces, oil base paint, tar and asphalt): Use a 1:1 mix of ammonia and water, or a 1:4 mix of bleach and water. Rinse with clean water and dry.

Steps 4 & 5 (all other tough stains): Step 4: Use a straight application of naphtha (lighter fluid). Rinse thoroughly with clean water and pat surface dry. Step 5: Use a 1:1 mix of isopropyl alcohol and water. If the stain persists, use straight alcohol. Rinse thoroughly with clean water and pat dry.

Note: For cleaning that requires step 4 or 5, use a soft cotton cloth saturated with the cleaning material and rub the stain in circles 10 times. Pat dry with another soft cotton cloth and check the results.

Please refer to the Mayer Fabrics website or contact customer service for approval of unlisted cleaning agents prior to use.

*Must be cleaned after each instance of exposure to hair and body oils.

The information published in this care guide refers to the performance of PERMABLOK[®] products in specific tests conducted under laboratory conditions. Results may vary under actual conditions.

This information is not a guarantee and does not relieve the user from the responsibility of the proper and safe use of the product and all cleaning agents. The use of certain agents can be harmful to the surface appearance and lifespan of vinyl. Mayer Fabrics, its agents, and assigns assume no responsibility resulting from the use of such cleaning agents to the vinyl.

Please check compatibility when using this product in combination with painted or varnished surfaces.

PERMABLOK[®] is a registered trademark of Spradling Holdings, Inc. Formula 409[®] is a registered trademark of The Clorox Company[®]

Ivory[®] is a registered trademark of Procter and Gamble[®]

Fantastik[®] is a registered trademark of DowBrands, Inc.[®], Registered trademark of the Dow Chemical Co.[®]

Mayer Fabrics is not sponsored by, affiliated with, or endorsed by such trademark owners. Additionally, any use by Mayer Fabrics of any third-party trademark does not constitute any endorsement by Mayer Fabrics of such third party.

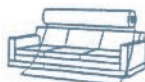
5 YEAR WARRANTY - Boteh, Collage, Infinity, Mandala, Soleil

Five (5) year limited performance warranty from the date of installation, when used for seating applications. See complete warranty at mayerfabrics.com.

Slick – Certain clothing and accessory dyes (such as those used on denim jeans) may migrate to lighter colors. This phenomenon is increased by humidity and temperature and is irreversible. Mayer Fabrics will not assume responsibility for dye transfer caused by external contaminants. Please check compatibility when using this product in combination with painted or varnished surfaces.



Railroaded: This feature allows reduction of seams and enables smoother furniture tailoring.



Fabric "up the roll" or "regular" position



Fabric "railroaded" or "top selvage" position

We recommend all railroaded patterns should be upholstered as shown on card.

TECHNICAL INFORMATION

Imagine Sunbrella Contract Plus Coordinates

(*Certifications Marks owned by ACT.)

Pattern 54"	Content and Backing	GREENGUARD Certified	Weight/Linear Yd.	Pattern Repeat	Finish	Abrasion [®] Wyzenbeek	Light [☀] Fastness	Flammability [🔥] *	Cleaning Code
BOTEH <i>Directional</i>	73% Sunbrella [®] Acrylic, 27% Sunbrella [®] Polyester Backing: None	Gold Certified	19.6 oz.	28" H 13.7" V	Sunbrella [®] Contract with Defiance [®] , Antimicrobial, Soil and Stain Protection	100,000 Double Rubs	2000 hours	Cal. 117-2013 NFPA 260 (Equiv. to UFAC)	WS - BC
COLLAGE <i>Directional</i>	67% Sunbrella [®] Acrylic, 33% Sunbrella [®] Polyester Backing: None	Gold Certified	16.4 oz.	9.25" H 13" V Random Match	Sunbrella [®] Contract with Defiance [®] , Antimicrobial, Soil and Stain Protection	100,000 Double Rubs	2000 hours	Cal. 117-2013 NFPA 260 (Equiv. to UFAC)	WS - BC
INFINITY <i>Directional Railroaded</i>	55% Sunbrella [®] Acrylic, 45% Sunbrella [®] Polyester Backing: None	Gold Certified	12.6 oz.	20" H 0" V	Sunbrella [®] Contract with Defiance [®] , Antimicrobial, Soil and Stain Protection	100,000 Double Rubs	2000 hours	Cal. 117-2013 NFPA 260 (Equiv. to UFAC)	WS - BC
MANDALA <i>Directional</i>	73% Sunbrella [®] Acrylic, 27% Sunbrella [®] Polyester Backing: None	Gold Certified	19.6 oz.	14" H 12.75" V	Sunbrella [®] Contract with Defiance [®] , Antimicrobial, Soil and Stain Protection	100,000 Double Rubs	2000 hours	Cal. 117-2013 NFPA 260 (Equiv. to UFAC)	WS - BC
SOLEIL <i>Directional</i>	59% Sunbrella [®] Acrylic, 41% Sunbrella [®] Polyester Backing: None	Gold Certified	13.9 oz.	0" H 0.125" V	Sunbrella [®] Contract with Defiance [®] , Antimicrobial, Soil and Stain Protection	100,000 Double Rubs	2000 hours	Cal. 117-2013 NFPA 260 (Equiv. to UFAC)	WS - BC
SLICK	100% Vinyl with Urethane Topcoat Backing: 100% Polyester Ultra Hi-Loft ^{2TM}	Certified	30 oz.	None	SILVERGUARD [®] with Antibacterial Silver Ion Technology, PERMABLOK [®] + PERMAGUARD [®]	100,000,000 Double Rubs	1000 hours	Cal. 117-2013 NFPA 260 (Equiv. to UFAC) For Additional Flammability Information See Below	Refer to cleaning section BC

May comply with California Technical Bulletin 133 when combined with appropriate components.

SLICK FLAMMABILITY[🔥]*

California Technical Bulletin 117, Section E
Boston Fire Dept. Code (BFD 1X-1)
FAA/FAR 25.853(a) & Appendix F Part I(a)(ii)
FMVSS 302

Passes
Passes
Passes
Passes

Federal St. 191A M 5903.1
IMO A.652 (16) 8.2 & 8.3
IMO FTP 2010 Code MSC.307(88), Part 8, 3.1 & 3.2
NY & NJ Port Authority Code

Passes
Passes
Passes
Passes

REDUCED ENVIRONMENTAL IMPACT - Boteh, Collage, Infinity, Mandala, Soleil

GREENGUARD Gold Certified products are tested for low chemical emissions to standard UL 2818. For more information, visit UL.com/gg.



The Facts icon indicates that a textile has been evaluated based on the requirements of the multi-attribute sustainability standard NSF/ANSI 336 through an independent third-party certification body authorized by the Association for Contract Textiles.

Defiance Antimicrobial Treatment - Non-leaching.

Color process creates no waste water and avoids harmful effluents associated with conventional dyeing processes.

Mayer Fabrics offers a reclaiming and recycling program for our Sunbrella[®] Contract collection, "Recycle my Sunbrella". Please refer to www.mayerfabrics.com for more information and a list of applicable fabrics.

REDUCED ENVIRONMENTAL IMPACT - Slick

**GREENGUARD Certified products are tested for low chemical emissions to standard UL 2818. For more information, visit UL.com/gg.
No Heavy Metals Formaldehyde Free**

ADDITIONAL INFORMATION

Additional colors are available. Please refer to our website or contact customer service.

Custom Capabilities: All patterns can be custom colored. Minimum yardage applies.

Memo Samples: Please keep this card intact. Individual memo samples can be ordered on our website or by contacting customer service.

Fabric Color Matching: Mayer Fabrics always attempts to ship a satisfactory commercial match. Because of industry standard dye lot variation, colors may not match exactly.

Digital Swatch Card Color Matching: Due to color variations on different monitors and color printers, actual swatch colors may vary slightly. Please request a memo sample from Mayer Fabrics to ensure proper color representation.

Specifications: Specifications are correct at the time of printing. Current specifications are available on our website.

For information or assistance with products or services, call us at 800.428.4415 or refer to our website, www.mayerfabrics.com.



MAYERFABRICS

GSA Contract #GS-28F-0022P

☎ 317.267.2626 or 800.428.4415 ☎ 317.267.2629 or 877.7SAMPLE

www.mayerfabrics.com

©2014 Mayer-Paetz, Inc.

ISCPCCD *ISCPCCD* 20914