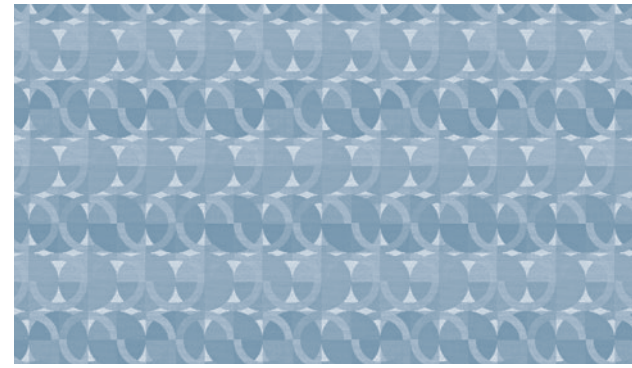


OBSESSION - Repeat: 7.25" H, 13.5" V, Random Match



XANADU - Repeat: 7.5" H, 14.875" V

CRYPTON STAIN RESISTANCE - Debut, Entourage, Malibu, Obsession, Paparazzi, Xanadu

Stain Resistance is based on a numerical scale with 5 being the highest for stain removal.

	After 5 min./After 24 hrs.		After 5 min./After 24 hrs.
Blood	Class 4-5/Class 4-5	Urine	Class 4-5/Class 4-5
Iodine	Class 4-5/Class 4-5	Suntan Lotion	Class 4-5/Class 4-5
Ketchup	Class 4-5/Class 4-5	Black Coffee	Class 4-5/Class 4-5
Milk	Class 4-5/Class 4-5	Cola	Class 4-5/Class 4-5

CRYPTON BACTERIAL AND FUNGUS/MILDEW RESISTANCE - Debut, Entourage, Malibu, Obsession, Paparazzi, Xanadu

Non leaching Silver Ion Technology microbial protection.

Excellent anti-bacterial and anti-fungal properties as evidenced by the following methods: 4 and 5 millimeter-wide growth-free zones produced against the staphylococcus aureus test organism.

Crypton resists fungal growth, test AATCC 30-2004, Aspergillus niger (ATCC #6275).

Crypton resists bacterial growth, test ISO 20743:2007(E), Klebsiella pneumoniae (ATCC #4352)

EPA Approved – When Crypton's Disinfectant and Deodorizer is used on Crypton Super Fabric, you have a disinfected fabric system. Crypton is the first and only fabric approved by the EPA proven to be disinfected. Crypton's Disinfectant and Deodorizer will kill MRSA, VRSA, IV, E. Coli, hepatitis and many more bacteria and viruses.

SPECIFIC TREATMENTS - Counterpoint

SILVERGUARD Counterpoint is treated with the most advanced silver ion technology, **SILVERGUARD**, providing a natural germ-fighting defense to help safeguard the consumer against odor and stain causing bacteria. When combined with **PERMAGUARD**, Spradling's patented stain-fighting and abrasion-resistant treatment, also featured in Counterpoint, **SILVERGUARD** delivers the ultimate performance solution.

PERMAGUARD Easily Cleaned Scratch Resistant

SUPERIOR PERFORMANCE - Counterpoint

Superior Abrasion UV Stability Polycarbonate Resin System

Hydrolytic Stability 7-year Hydrolysis - ASTM D-3690-02, Hydrolytic stability section 6.11 (adhesion, surface abrasion, resistance to flexing)

CRYPTON CARE AND CLEANING INFORMATION - Debut, Entourage, Malibu, Obsession, Paparazzi, Xanadu

C: Crypton® Cleaning – Crypton fabrics are available in various fiber types, and all Crypton fabrics can be cleaned with soap and water. The ability to

use bleach as a cleaner without damaging the fabric is fiber- and dye-dependent. Cryptons with solution-dyed (acrylic, nylon, olefin) fibers and all polyester Crypton selections can be cleaned safely with bleach; a 10% bleach and 90% water solution is recommended and thorough rinsing is required. For the best cleaning solution, use **CRYPTON UPHOLSTERY CLEANER**, available from Mayer Fabrics.**BC: Bleach Cleanable** - 1 part bleach, 9 parts water = 10% bleach, 90% water solution. Always rinse promptly with clean water after applying the bleach solution.**CLEANING INFORMATION AND SUPERIOR STAIN RESISTANCE - Counterpoint**Most difficult stains are effortlessly cleaned with a dry cloth, and stubborn soiling may be eliminated with isopropyl alcohol. Not only do stains disappear in seconds, but **PERMAGUARD** provides unequalled resistance to scratches, scuffs, and abrasion.

Step 1: Only a soft dry white cotton cloth is needed when stains are fresh and can be possibly be removed immediately.

Step 2: More stubborn soiling may be eliminated using a mix 75% isopropyl alcohol and 25% clear water applied to the stain area.

Step 3: Rinse thoroughly with clear water.

Step 4: Pat dry with damp white cloth.

Step 5: For cleaning that may require a repeat of step 2, use a soft cloth and rub the stain in circles 10 times. Pat dry with another soft cotton cloth and check results.

Please refer to the Mayer Fabrics website or contact customer service for approval of unlisted cleaning agents prior to use.

BC: Bleach Cleanable - 1 part bleach, 4 parts water = 20% bleach, 80% water solution. Always rinse promptly with clean water after applying the bleach solution.

Stain Cleaning Agent ¹ Rating ²	Stain	Cleaning Agent ¹ Rating ²	
Red Wine	Class 4	Lipstick/Suntan Oil or Lotion	Class 4
Coffee/Tea/Soda	Class 4	Machine Oil/Grease	Class 4
Milk	Class 4	Urine/Blood	Class 4
Ketchup/Mustard/Soy Sauce	Class 4		

¹Cleaning Agents - Any of the following solutions may be used:

Alcohol, water, and bleach (5:5:2) Bleach and water (1:5) Alcohol and water (1:1)

²Rating System - No staining marks on the surface (4), Slight stain on the surface (3), Strong stain on the surface (2), No cleanability at all (1)

LUXE CRYPTON PLUSCOORDINATES

Featuring Silver Ion Technology



MAYERFABRICS

TECHNICAL INFORMATION

Luxe Crypton Plus Coordinates

*Certification Marks Owned by Act.

Pattern 54 [*]	Content and Backing	GREENGUARD Certified	Weight/ Linear Yd	Pattern Repeat	Finish	Abrasion Wyzenbeek	Light Fastness	Flammability	Cleaning Code
COUNTERPOINT <i>Directional</i>	100% Polyurethane - PVC FREE Backing: 100% Polyester	Certified	21 oz.	Non-Matching	SILVERGUARD [®] with Antimicrobial Silver Ion Technology and PERMAGUARD [®]	400,000 Double Rubs	250 hours	Cal. 117-2013 Cal. 117, Section E NFPA 260 (Equip. to UFAC) FMVSS 302, IMO A.652(16) 8.2, IMO FTP 2010 Code MSC.307(88), Part 8, 3.1	Refer to cleaning section BC
DEBUT <i>Directional</i>	100% Recycled Polyester (76% Pre-/24% Post-Consumer) Backing: Crypton [®] Green	Gold Certified	27 oz.	0" H 0.3125" V	Crypton [®] Green with Antimicrobial Silver Ion Technology	150,000 Double Rubs	60 hours	Cal. 117-2013 Cal. 117, Section E NFPA 260 (Equip. to UFAC)	C - BC
ENTOURAGE <i>Directional Railroaded</i>	100% Recycled Polyester (70% Pre-/30% Post-Consumer) Backing: Crypton [®] Green	Gold Certified	21 oz.	0.875" H 0" V	Crypton [®] Green with Antimicrobial Silver Ion Technology	180,000 Double Rubs	60 hours	Cal. 117-2013 Cal. 117, Section E NFPA 260 (Equip. to UFAC)	C - BC
MALIBU <i>Directional</i>	100% Polyester Backing: Crypton [®]	Gold Certified	13.37 oz.	Non-Matching	Crypton [®] with Antimicrobial Silver Ion Technology	100,000 Double Rubs	40 hours	Cal. 117-2013 Cal. 117, Section E NFPA 260 (Equip. to UFAC)	C - BC
OBSESSION <i>Directional</i>	54% Recycled Polyester (29% Post-/25% Pre-Consumer), 46% Polyester Backing: Crypton [®] Green	Gold Certified	25 oz.	7.25" H 13.5" V Random Match	Crypton [®] Green with Antimicrobial Silver Ion Technology	100,000 Double Rubs	60 hours	Cal. 117-2013 Cal. 117, Section E NFPA 260 (Equip. to UFAC)	C - BC
PAPARAZZI <i>Directional</i>	100% Pre-Consumer Recycled Polyester Backing: Crypton [®] Green	Gold Certified	23.5 oz.	0.5" H 0.625" V	Crypton [®] Green with Antimicrobial Silver Ion Technology	70,000 Double Rubs	60 hours	Cal. 117-2013 Cal. 117, Section E NFPA 260 (Equip. to UFAC)	C - BC
XANADU <i>Directional</i>	100% Polyester Backing: Crypton [®]	Gold Certified	16.272 oz.	7.5" H 14.875" V	Crypton [®] with Antimicrobial Silver Ion Technology	51,000 Double Rubs	40 hours	Cal. 117-2013 Cal. 117, Section E NFPA 260 (Equip. to UFAC)	C - BC

All patterns may comply with California Technical Bulletin 133 when combined with appropriate components.

REDUCED ENVIRONMENTAL IMPACT - Debut, Entourage, Obsession, Paparazzi

Recycled Content

GREENGUARD Gold Certified products are tested for low chemical emissions to standard UL 2818. For more information, visit UL.com/gg.

All Crypton products are environmentally preferable. Crypton is produced in a world-class manufacturing operation. Crypton is committed to green and has incorporated Crypton's optimized green formulation in all Crypton upholstery, meaning a greener Crypton.

REDUCED ENVIRONMENTAL IMPACT - Malibu, XanaduGREENGUARD Gold Certified products are tested for low chemical emissions to standard UL 2818. For more information, visit UL.com/gg.

All Crypton products are environmentally preferable. Crypton is produced in a world-class manufacturing operation. Crypton is committed to green and has incorporated Crypton's optimized green formulation in all Crypton upholstery, meaning a greener Crypton.

REDUCED ENVIRONMENTAL IMPACT - Counterpoint

No Heavy Metals Formaldehyde Free

GREENGUARD Certified products are tested for low chemical emissions to standard UL 2818. For more information, visit UL.com/gg.**ADDITIONAL INFORMATION**

Additional colors are available. Please refer to the Mayer Fabrics website or contact customer service.

Custom Capabilities: All patterns can be custom colored. Minimum yardage applies.

Memo Samples: Please keep this card intact. Individual memo samples can be ordered on our website or by contacting customer service.

Fabric Color Matching: Mayer Fabrics always attempts to ship a satisfactory commercial match. Because of industry standard dye lot variation, colors may not match exactly.

Digital Swatch Card Color Matching: Due to color variations on different monitors and color printers, actual swatch colors may vary slightly. Please request a memo sample from Mayer Fabrics to ensure proper color representation.

Specifications: Specifications are correct at the time of printing. Additional specifications are available on our website.

For information or assistance with products or services, call us at 800.428.4415 or refer to our website, www.mayerfabrics.com.

Railroaded: This feature allows reduction of seams and enables smoother furniture tailoring.



We recommend all railroaded patterns should be upholstered as shown on card.

GSA Contract #GS-28F-0022P

LPCCD 50914

t 317.267.2626 or 800.428.4415 f 317.267.2629 or 877.7SAMPLE

www.mayerfabrics.com

©2014 Mayer-Paetz, Inc.

Featuring Silver Ion Technology



OBSESSION
WC752-009 Orange Crush



ENTOURAGE
WC775-009 Tangerine



MALIBU
WC718-009 Cinnabar



MALIBU
WC718-011 Poppy



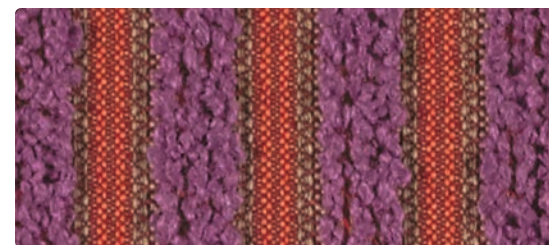
MALIBU
WC718-005 Lavender



DEBUT
WC747-011 Bubble Gum



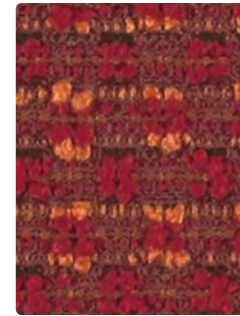
PAPARAZZI
WC774-015 Sherbert



ENTOURAGE
WC775-005 Purple Zest



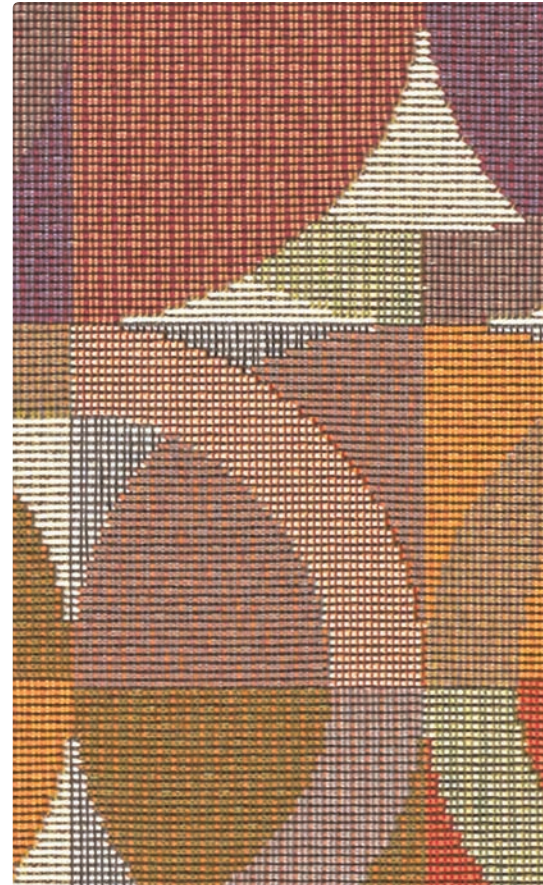
DEBUT
WC747-002 Sunshine



PAPARAZZI
WC774-001 Carmine



ENTOURAGE
WC775-001 Lipstick



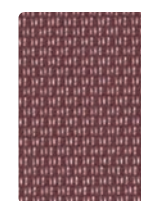
XANADU
WC712-009 Orchard



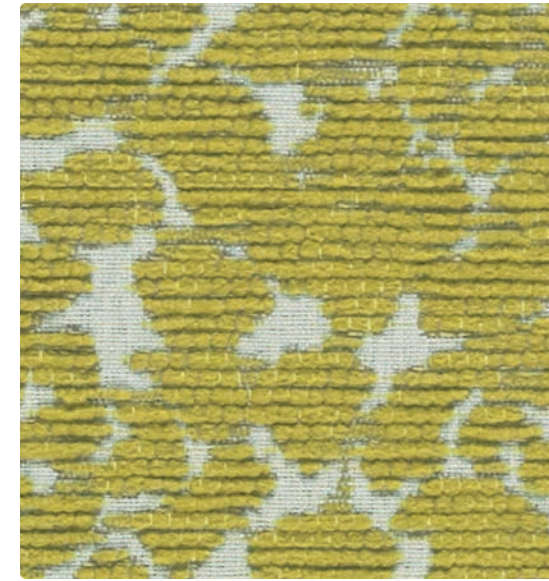
COUNTERPOINT
CP-009 Tangerine



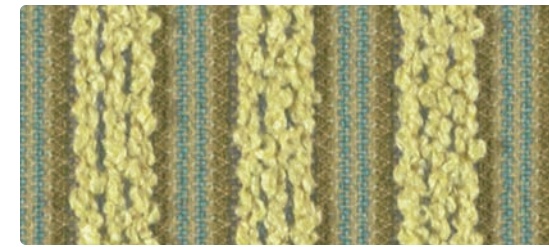
COUNTERPOINT
CP-001 Scarlet



COUNTERPOINT
CP-008 Sangria



OBSESSION
WC752-003 Jadestone



ENTOURAGE
WC775-003 Key Lime



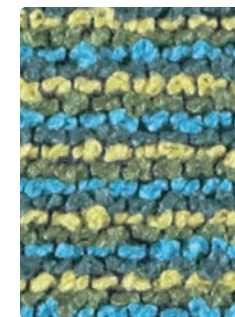
MALIBU
WC718-003 Fern



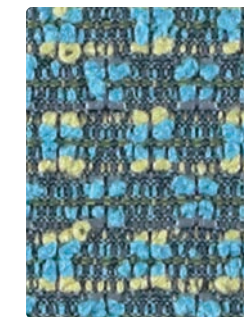
MALIBU
WC718-014 Cyan



MALIBU
WC718-004 Denim



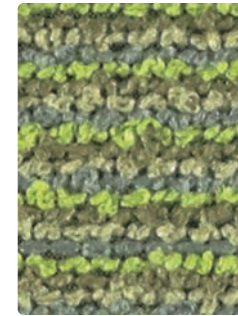
DEBUT
WC747-014 Brilliant Blue



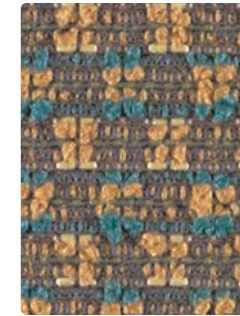
PAPARAZZI
WC774-004 Brilliant Blue



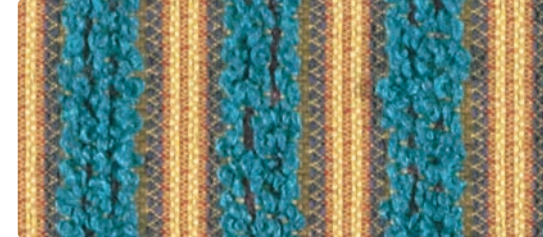
ENTOURAGE
WC775-004 Pacific



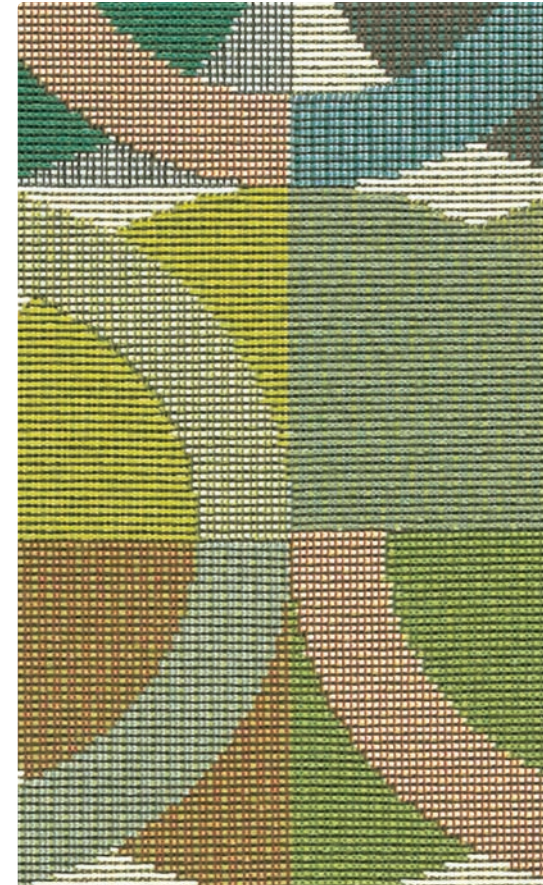
DEBUT
WC747-003 Peridot



PAPARAZZI
WC774-002 Amber



ENTOURAGE
WC775-014 Blue Topaz



XANADU
WC712-003 Emerald



COUNTERPOINT
CP-013 Chartreuse



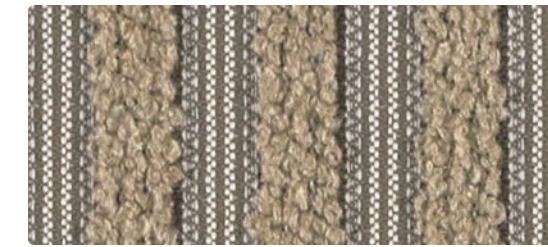
COUNTERPOINT
CP-014 Capri



COUNTERPOINT
CP-004 Royal



OBSESSION
WC752-007 Champagne



ENTOURAGE
WC775-000 Bark



MALIBU
WC718-007 Parchment



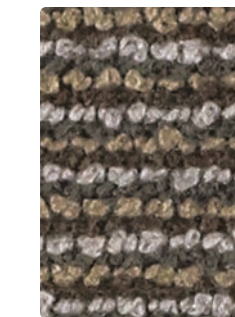
MALIBU
WC718-010 Mushroom



MALIBU
WC718-000 Sable



PAPARAZZI
WC774-000 Soapstone



DEBUT
WC747-000 Cinder



ENTOURAGE
WC775-006 Pewter



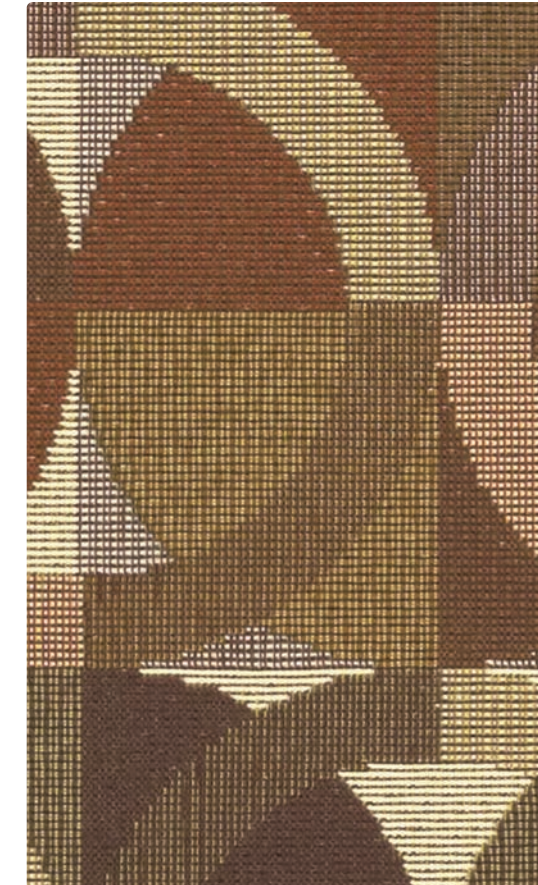
PAPARAZZI
WC774-007 French Beige



DEBUT
WC747-007 Pearl Bisque



ENTOURAGE
WC775-007 Cliff



XANADU
WC712-000 Canyon



COUNTERPOINT
CP-007 Mica



COUNTERPOINT
CP-010 Umber



COUNTERPOINT
CP-006 Graphite