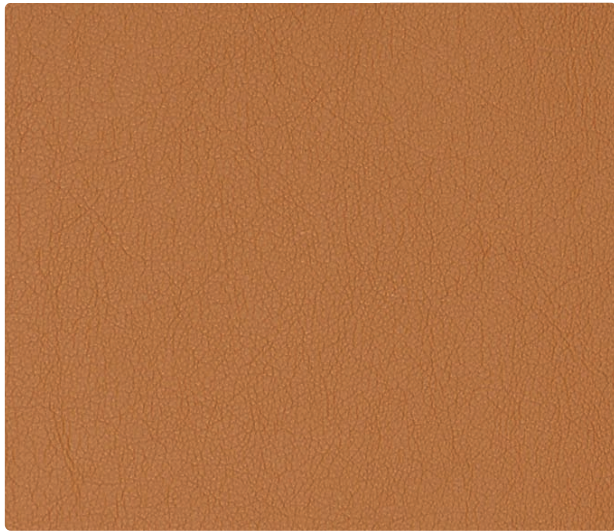


POLYURETHANE – PVC FREE I COORDINATES



PHOENIX



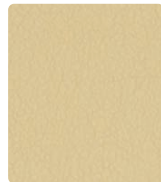
PH-027
Saddle



PH-032
Straw



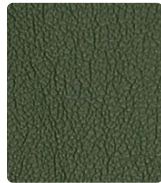
PH-043
Lime



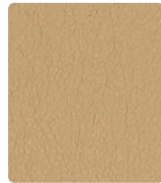
PH-002
Wheat



PH-029
Marigold



PH-003
Palm



PH-017
Buckskin



PH-039
Tangelo



PH-054
Capri



PH-010
Mocha



PH-001
Berry



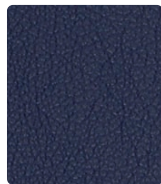
PH-044
Sky



PH-026
Charcoal



PH-008
Magenta

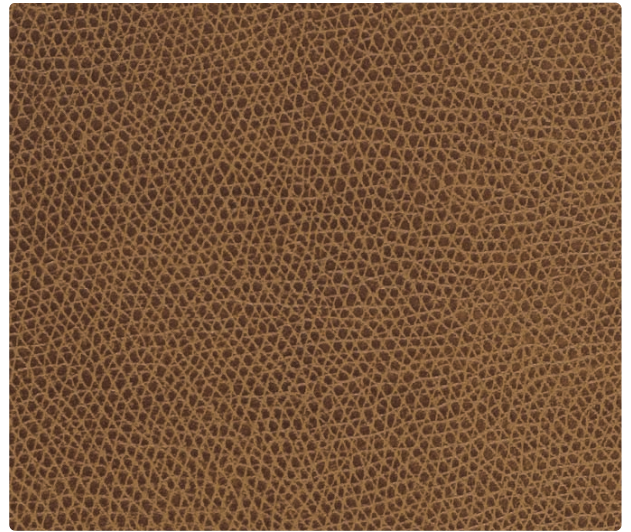


PH-004
Admiral



PH-006
Lava

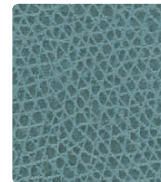
KOBE



KB-010
Butternut



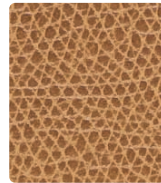
KB-002
Bamboo



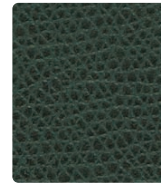
KB-014
Cyan



KB-007
Sand



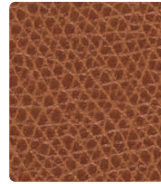
KB-019
Buckskin



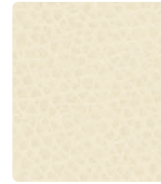
KB-003
Laurel



KB-036
Greystone



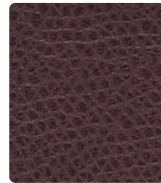
KB-009
Sienna



KB-017
Parchment



KB-020
Shiitake



KB-001
Maroon



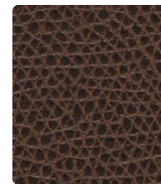
KB-027
Almond



KB-016
Shadow



KB-004
Indigo

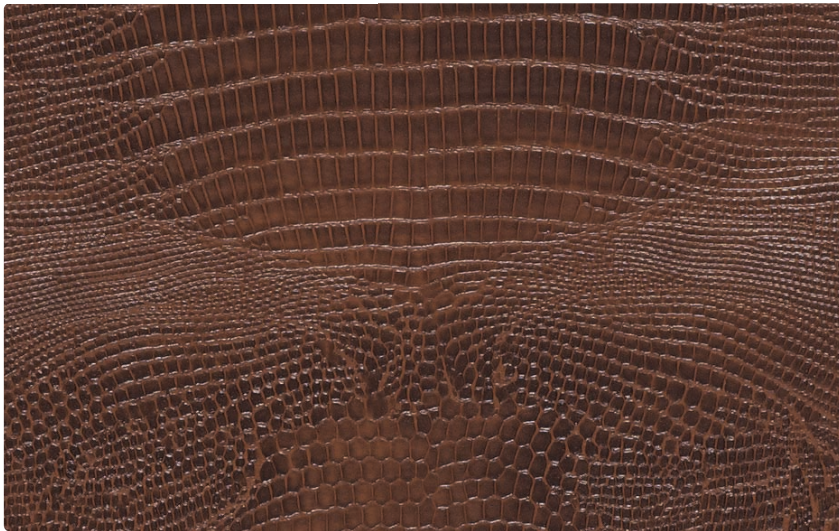


KB-000
Java



KB-006
Ebony

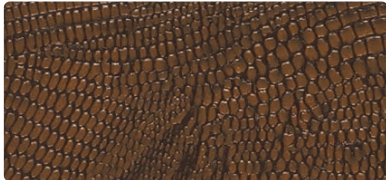
KOMODO



KO-010
Umber



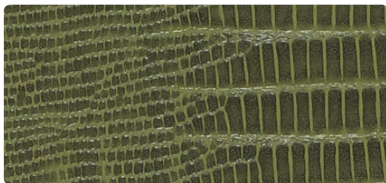
KO-027
Pyrite



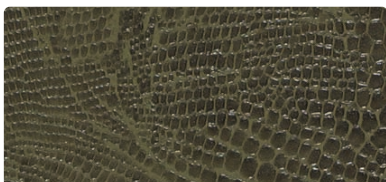
KO-009
Cordovan



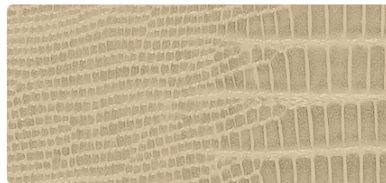
KO-001
Maroon



KO-003
Jade



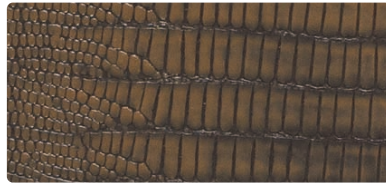
KO-013
Ivy



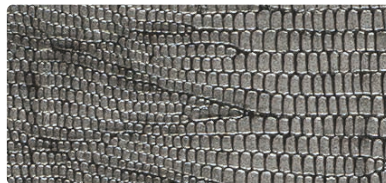
KO-007
Fog



KO-019
Rustic



KO-020
Sepia



KO-036
Antique

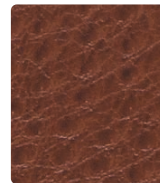


KO-006
Black

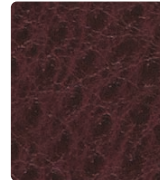
EMU



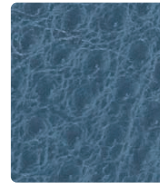
EU-002
Caramel



EU-009
Tawny



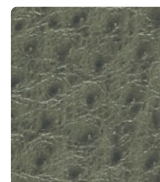
EU-001
Mulberry



EU-004
Ultramarine



EU-023
Pistachio



EU-013
Eucalyptus



EU-007
Oyster



EU-030
Latte



EU-000
Espresso



EU-026
Pebble



EU-006
Black

TECHNICAL INFORMATION

Polyurethane – PVC FREE I Coordinates

* ACT* Registered Certification Marks

Pattern 54 ¹¹	Content and Backing	Weight/ Linear Yd	Pattern Repeat	Finish	Abrasion Wyzenbeek ^{A*}	Light- Fastness [*]	Flammability ^{fl*}	Cleaning Code
EMU <i>Directional</i>	100% Polyurethane - PVC FREE Knitted Polyester Backing	16.5 oz.	Non-matching	None	455,000 Double Rubs	40 hours	Cal. 117-E NFPA 260 (Equiv. to UFAC)	WS
KOBE <i>Directional</i>	100% Polyurethane - PVC FREE Knitted Polyester Backing	16.5 oz.	None	None	1,000,000 Double Rubs	40 hours	Cal. 117-E NFPA 260 (Equiv. to UFAC)	WS
KOMODO <i>Directional</i>	100% Polyurethane - PVC FREE Knitted Polyester Backing	16.5 oz.	7.5" H 7.5" V	None	970,000 Double Rubs	40 hours	Cal. 117-E NFPA 260 (Equiv. to UFAC)	WS
PHOENIX	100% Polyurethane - PVC FREE Knitted Polyester Backing	19.5 oz.	None	None	1,002,000 Double Rubs	40 hours	Cal. 117-E NFPA 260 (Equiv. to UFAC) FMVSS 302	WS

All patterns may comply with California Technical Bulletin 133 when combined with appropriate components.

REDUCED ENVIRONMENTAL IMPACT (Emu, Kobe, Komodo)

PVC FREE **Phthalate Free**

REDUCED ENVIRONMENTAL IMPACT (Phoenix)

PVC FREE **Biodegradable Backing**

Chlorine, bromine, or phthalate ester plasticizer materials were not used in the manufacturing of Phoenix.

Many of the materials used in the manufacturing of Phoenix contain very low VOC content. Phoenix is protected by a top-finish coating that contains organic solvents. The organic solvents (VOC's) portion of the top-finish are removed during the manufacturing process. The final product contains only trace levels of VOC's. The material may meet Chair/Cushion VOC requirements.

SUPERIOR PERFORMANCE

Hydrolysis testing - These patterns meet Grade A performance requirements set by ASTM 3690 02.
Hydrolysis (6 hours boiling water) No Delamination

CLEANING INFORMATION

WS: Water/Solvent Cleaner – Spot clean, with a mild solvent, an upholstery shampoo, or the foam from a mild detergent. When using a solvent or dry cleaning product, follow instructions carefully and clean only in a well-ventilated room. Avoid any product that contains carbon tetrachloride or other toxic materials. With either method, pretest a small area before proceeding.

For detailed care and cleaning information for each pattern, please refer to the Mayer Fabrics website or contact customer service.

ADDITIONAL INFORMATION

Additional colors are available. Please contact Mayer Fabrics for more information.

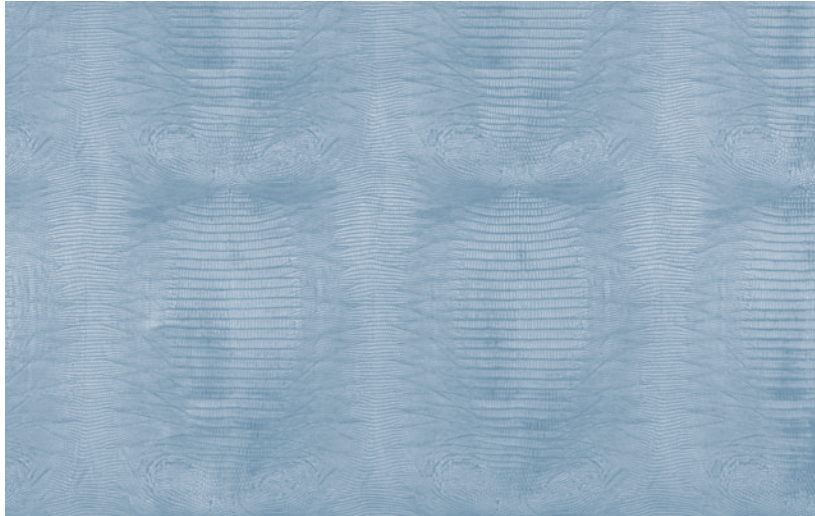
Custom Capabilities: All patterns can be custom colored. Minimum yardage applies.

Memo Samples: Please keep this card intact. Memo samples can be ordered on our website or by contacting customer service.

Color Matching: Mayer Fabrics always attempts to ship a satisfactory commercial match. Because of industry standard dye lot variation, colors may not match exactly.

Specifications: Specifications are correct at the time of printing. Current specifications are available on our website.

For information or assistance with products or services, call us at 800.428.4415 or refer to our website, www.mayerfabrics.com.



KOMODO - Repeat: 7.5" H, 7.5" V

GSA Contract #GS-28F-0022P



POLYICCD  50411

☎ 317.267.2626 or 800.428.4415 ☎ 317.267.2629 or 877.7SAMPLE
www.mayerfabrics.com

©2011 Mayer-Paetz, Inc.