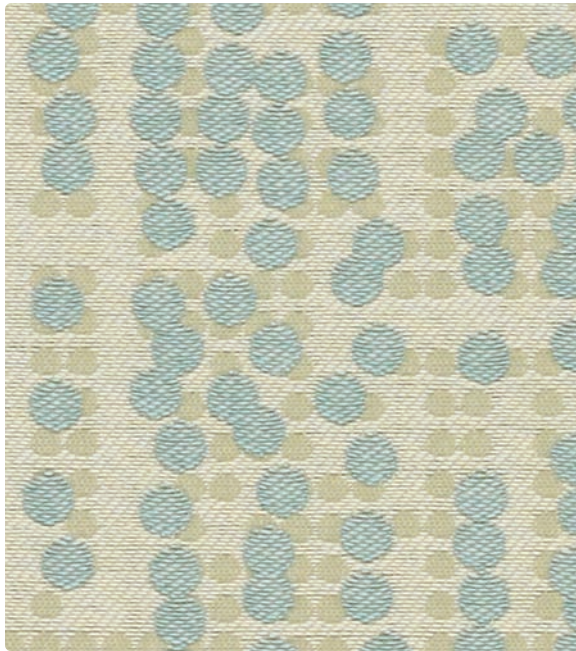


## WASTE NOT / WANT NOT PLUS COLLECTION

---





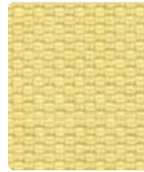
**CIRCUIT**  
390-024 Spa



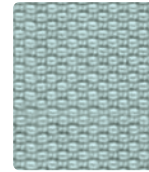
**DETAIL**  
391-003 Celadon



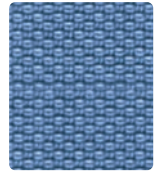
**AURORA**  
383-003 Olive



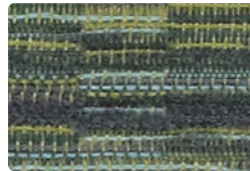
**COUNTERPOINT**  
CP-013 Chartreuse



**COUNTERPOINT**  
CP-024 Caribbean



**COUNTERPOINT**  
CP-004 Royal



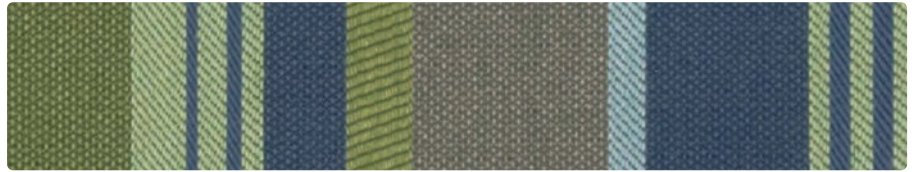
**AURORA**  
383-013 Emerald



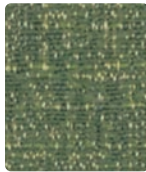
**DETAIL**  
391-004 Indigo



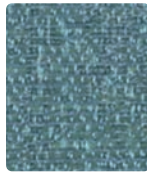
**AURORA**  
383-004 Sky



**AVENUE**  
389-004 Aquamarine



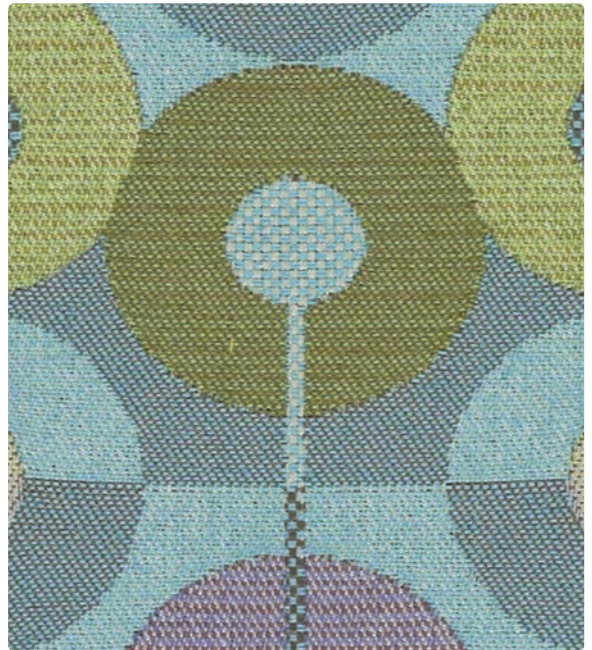
**GROUNDWORKS**  
386-003 Emerald



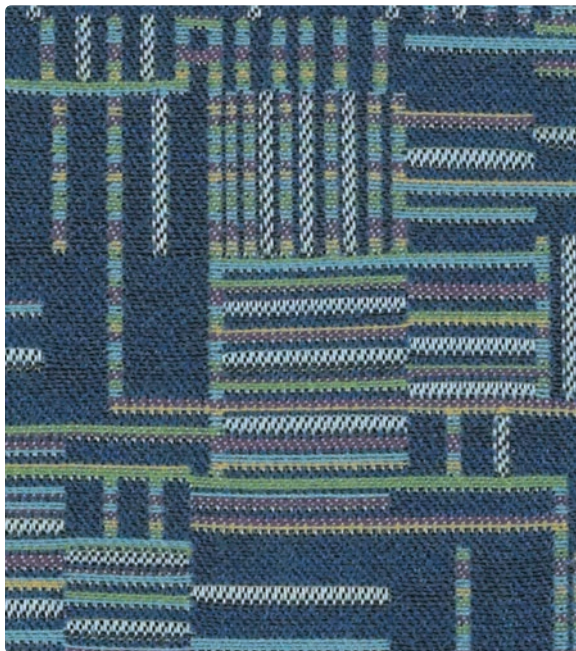
**GROUNDWORKS**  
386-014 Ocean



**GROUNDWORKS**  
386-004 Midnight



**CIRCUMFERENCE**  
384-024 Turquoise



**MATRIX**  
387-004 Cerulean



**LAREDO**  
LR-023 Wasabi



**LAREDO**  
LR-014 Azure



**LAREDO**  
LR-004 Sapphire





**WILDFLOWER**  
392-002 Butterscotch



**DETAIL**  
391-002 Butterscotch



**AURORA**  
383-002 Wheat



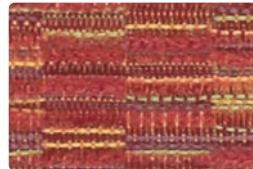
**COUNTERPOINT**  
CP-009 Tangerine



**COUNTERPOINT**  
CP-001 Scarlet



**COUNTERPOINT**  
CP-008 Sangria



**AURORA**  
383-001 Poppy



**DETAIL**  
391-001 Cabernet



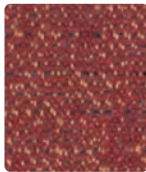
**AURORA**  
383-005 Wisteria



**AVENUE**  
389-019 Sunset



**GROUNDWORKS**  
386-009 Clementine



**GROUNDWORKS**  
386-001 Persimmon



**GROUNDWORKS**  
386-005 Amethyst



**MATRIX**  
387-008 Vineyard



**EVOLVE**  
385-005 Amethyst



**LAREDO**  
LR-002 Day Lilly



**LAREDO**  
LR-001 Paprika



**LAREDO**  
LR-005 Concord





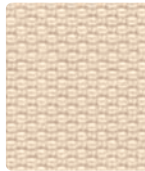
**EVOLVE**  
385-007 Oatmeal



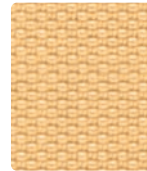
**DETAIL**  
391-007 Taupe



**AURORA**  
383-007 Stone



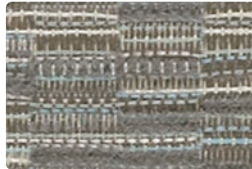
**COUNTERPOINT**  
CP-007 Mica



**COUNTERPOINT**  
CP-020 Spice



**COUNTERPOINT**  
CP-006 Graphite



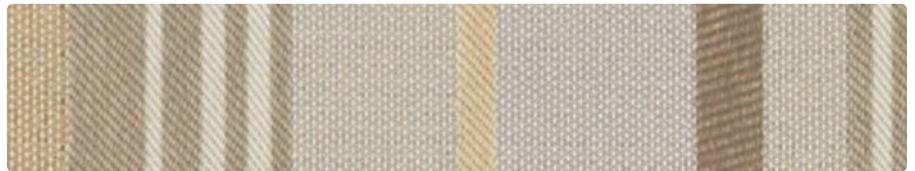
**AURORA**  
383-014 Slate



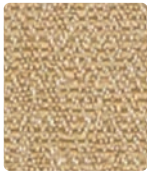
**DETAIL**  
391-006 Granite



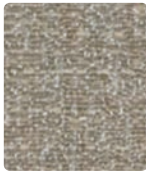
**AURORA**  
383-000 Granite



**AVENUE**  
389-007 Mushroom



**GROUNDWORKS**  
386-017 Wheat



**GROUNDWORKS**  
386-016 Cobblestone



**GROUNDWORKS**  
386-006 Ebony



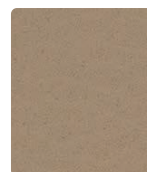
**WILDFLOWER**  
392-000 Java



**CIRCUMFERENCE**  
384-007 Natural



**LAREDO**  
LR-017 Khaki



**LAREDO**  
LR-026 Stone

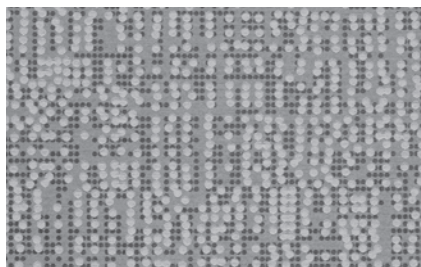


**LAREDO**  
LR-000 Sable

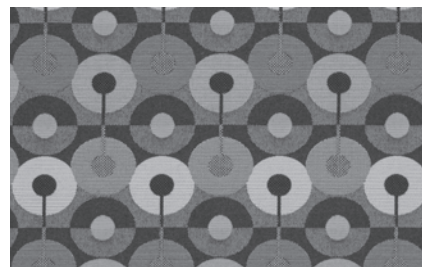




Avenue - Repeat: 9.438" H, 0" V  
Shown Railroaded



Circuit - Repeat: 14.375" H, 18.461" V Random Match



Circumference - Repeat: 3.5" H, 6" V



Evolve - Repeat: 14.3" H, 10" V



Matrix - Repeat: 7.1" H, 14.625" V Random Match



Wildflower - Repeat: 14.375" H, 19" V

### REDUCED ENVIRONMENTAL IMPACT

AURORA, AVENUE, CIRCUIT, CIRCUMFERENCE, DETAIL, EVOLVE, GROUNDWORKS, MATRIX, WILDFLOWER

Recycled Content

GREENGUARD Gold Certified products are tested for low chemical emissions to standard UL 2818. For more information, visit [UL.com/gg](http://UL.com/gg).

AVENUE, CIRCUIT, DETAIL, WILDFLOWER

Recyclable



Eco-System®

Sustainable. Attainable at Mayer Fabrics.

REPREVE

Repreve nylon is made entirely from pre-consumer fiber waste, making it one of the most earth-friendly fabric ingredients you'll find anywhere. The proprietary Repreve process took years to develop and is third party certified for recycled content. The production of Repreve nylon conserves energy and natural resources by offsetting the need to produce virgin nylon fiber, creating a reprieve for the planet. Repreve and It's What's In It are trademarks of Unifi, Inc.

AVENUE, CIRCUIT, DETAIL WILDFLOWER



\* The Facts icon indicates that a textile has been evaluated based on the requirements of the multi-attribute sustainability standard NSF/ANSI 336 through an independent third-party certification body authorized by the Association for Contract Textiles.

COUNTERPOINT, LAREDO

GREENGUARD Certified products are tested for low chemical emissions to standard UL 2818. For more information, visit [UL.com/gg](http://UL.com/gg).

COUNTERPOINT

No Heavy Metals  
Formaldehyde Free

LAREDO

PVC FREE Phthalate Free Heavy Metal Free Formaldehyde Free Low VOC BPA Free Non-Toxic  
99%+ of all water and raw materials used in production are reclaimed and recycled Energy and Water Efficient Production

### SPECIFIC TREATMENTS - Counterpoint

**SILVERGUARD** Counterpoint is treated with the most advanced silver ion technology, SILVERGUARD®, providing a natural germ-fighting defense to help safeguard the consumer against odor and stain causing bacteria. When combined with PERMAGUARD®, Spradling's patented stain-fighting and abrasion-resistant treatment, also featured in Counterpoint, SILVERGUARD® delivers the ultimate performance solution.

**PERMAGUARD** Easily Cleaned Scratch Resistant

### SUPERIOR PERFORMANCE - Counterpoint

Superior Abrasion UV Stability Polycarbonate Resin System

Hydrolytic Stability 7-year Hydrolysis - ASTM D-3690-02, Hydrolytic stability section 6.11 (adhesion, surface abrasion, resistance to flexing)

### SUPERIOR PERFORMANCE - Laredo

Engineered specifically for the demanding Healthcare, Hospitality and Contract markets.

Exceptional Abrasion Resistance Anti-Bacterial / Anti-Microbial Stain Resistant

Knit Backing for Ease of Upholstering Mildew Resistant Bleach Cleanable with 4:1 (25%) Bleach Solution

7 year Hydrolysis rating – The Accelerated Aging test (Jungle Test) is performed by placing material in a controlled apparatus at 70° C/158° F and 90% humidity.

### CLEANING INFORMATION

**S:** Solvent – Spot clean using a mild water-free solvent or dry cleaning product. Clean only in a well-ventilated room and avoid any product containing carbon tetrachloride or other toxic materials. Pretest a small area before proceeding.

**WS:** Water/Solvent Cleaner – Spot clean, with a mild solvent, an upholstery shampoo, or the foam from a mild detergent. When using a solvent or dry cleaning product, follow instructions carefully and clean only in a well-ventilated room. Avoid any product that contains carbon tetrachloride or other toxic materials. With either method, pretest a small area before proceeding.

**PERMAGUARD:** Most difficult stains are effortlessly cleaned with a dry cloth, and stubborn soiling may be eliminated with isopropyl alcohol.

Step 1: Only a soft dry white cotton cloth is needed when stains are fresh and can be possibly be removed immediately.

Step 2: More stubborn soiling may be eliminated using a mix 75% isopropyl alcohol and 25% clear water applied to the stain area.

Step 3: Rinse thoroughly with clear water.

Step 4: Pat dry with damp white cloth.

Step 5: For cleaning that may require a repeat of step 2, use a soft cloth and rub the stain in circles 10 times. Pat dry with another soft cotton cloth and check results.

Please refer to the Mayer Fabrics website or contact customer service for approval of unlisted cleaning agents prior to use.

### BLEACH CLEANABLE

AURORA, AVENUE, CIRCUIT, CIRCUMFERENCE, COUNTERPOINT, DETAIL, EVOLVE, GROUNDWORKS, MATRIX, WILDFLOWER

1 part bleach, 4 parts water = 20% bleach, 80% water solution. Always rinse promptly with clean water after applying the bleach solution.

LAREDO

1 part bleach, 3 parts water = 25% bleach, 75% water solution. Always rinse promptly with clean water after applying the bleach solution.

For detailed care and cleaning information for each pattern, please refer to the Mayer Fabrics website or contact customer service.

# TECHNICAL INFORMATION

## Waste Not / Want Not Plus Collection

\* Certification Marks owned by ACT.

| Pattern 54"                   | Content and Backing   | GREENGUARD Certified | Weight/ Linear Yd | Pattern Repeat                   | Finish  | Abrasion Wyzenbeek    | Light Fastness | Flammability  | Cleaning Code |
|-------------------------------|---|----------------------|-------------------|----------------------------------|---|-----------------------|----------------|---|---------------|
| AURORA Directional            | 43% Solution Dyed Pre-Consumer Recycled Nylon, 43% Solution Dyed Nylon, 12% Polyester, 2% Olefin Backing: Nylon | Gold Certified       | 16.5 oz.          | 14.2" H 7.1" V Random Match      | Stain Repellent and Antimicrobial                                     | 155,000 Double Rubs   | 200 hours      | Cal. 117-E NFPA 260 (Equiv. to UFAC)  | WS            |
| AVENUE Directional Railroaded | 100% Repreve Solution Dyed Pre-Consumer Recycled Nylon Backing: Nylon   | Gold Certified       | 9.968 oz.         | 9.438" H 0" V                    | Stain Repellent   | 335,000 Double Rubs   | 240 hours      | Cal. 117-E NFPA 260 (Equiv. to UFAC)  | S             |
| CIRCUIT Directional           | 100% Repreve Solution Dyed Pre-Consumer Recycled Nylon Backing: Nylon   | Gold Certified       | 10.384 oz.        | 14.375" H 18.461" V Random Match | Stain Repellent   | 230,000 Double Rubs   | 240 hours      | Cal. 117-E NFPA 260 (Equiv. to UFAC)  | S             |
| CIRCUMFERENCE Directional     | 50% Solution Dyed Pre-Consumer Recycled Nylon, 50% Solution Dyed Nylon Backing: Nylon                           | Gold Certified       | 14.6 oz.          | 3.5" H 6" V                      | Stain Repellent and Antimicrobial                                     | 355,000 Double Rubs   | 200 hours      | Cal. 117-E NFPA 260 (Equiv. to UFAC)  | WS            |
| COUNTERPOINT Directional      | 100% Polyurethane - PVC FREE Backing: 100% Polyester  | Certified            | 21 oz.            | Non-Matching                     | SILVERGUARD® with Antibacterial Silver Ion Technology and PERMAGUARD® | 400,000 Double Rubs   | 250 hours      | Cal. 117-E, NFPA 260 (Equiv. to UFAC), FMVSS 302, IMO A. 652(16) 8.2., IMO FTP 2010 Code MSC.307(88), Part 8, 3.1 | PERMAGUARD    |
| DETAIL Directional            | 100% Repreve Solution Dyed Pre-Consumer Recycled Nylon Backing: Nylon   | Gold Certified       | 9.728 oz.         | .1875" H .375" V                 | Stain Repellent   | 390,000 Double Rubs   | 240 hours      | Cal. 117-E NFPA 260 (Equiv. to UFAC)  | S             |
| EVOLVE Directional            | 50% Solution Dyed Pre-Consumer Recycled Nylon, 50% Solution Dyed Nylon Backing: Nylon                           | Gold Certified       | 13.5 oz.          | 14.3" H 10" V                    | Stain Repellent and Antimicrobial                                     | 240,000 Double Rubs   | 200 hours      | Cal. 117-E NFPA 260 (Equiv. to UFAC)  | WS            |
| GROUNDWORKS Directional       | 50% Solution Dyed Pre-Consumer Recycled Nylon, 50% Solution Dyed Nylon Backing: Nylon                           | Gold Certified       | 9.0 oz.           | 14.2" H 15.8" V Non-Matching     | Stain Repellent and Antimicrobial                                     | 340,000 Double Rubs   | 200 hours      | Cal. 117-E NFPA 260 (Equiv. to UFAC)  | WS            |
| LAREDO Directional            | 100% Polyurethane - PVC FREE Backing: 100% Polyester  | Certified            | 18 oz.            | None                             | Cleangene   | 1,000,000 Double Rubs | 200 hours      | Cal. 117-E, NFPA 260 (Equiv. to UFAC), ASTM E84 Class 1 or A, BIFMA, IMO A. 652(16) 8.2.                          | WS            |
| MATRIX Directional            | 50% Solution Dyed Pre-Consumer Recycled Nylon, 50% Solution Dyed Nylon Backing: Nylon                           | Gold Certified       | 14.5 oz.          | 7.1" H 14.625" V Random Match    | Stain Repellent and Antimicrobial                                     | 305,000 Double Rubs   | 200 hours      | Cal. 117-E NFPA 260 (Equiv. to UFAC)  | WS            |
| WILDFLOWER Directional        | 100% Solution Dyed Recycled Nylon (90% Repreve Pre-/7% Pre-/3% Post-Consumer) Backing: Nylon                    | Gold Certified       | 13.792 oz.        | 14.375" H 19" V                  | Stain Repellent   | 165,000 Double Rubs   | 240 hours      | Cal. 117-E NFPA 260 (Equiv. to UFAC)  | S             |

All patterns may comply with California Technical Bulletin 133 when combined with appropriate components.

### ADDITIONAL INFORMATION

Additional colors not swatched on this card are available. Please contact Mayer Fabrics or refer to our website for more information.

**Custom Capabilities:** All patterns can be custom colored. Minimum yardage applies.

**Memo Samples:** Please keep this card intact. Individual memo samples can be ordered on our website or by contacting customer service.

**Fabric Color Matching:** Mayer Fabrics always attempts to ship a satisfactory commercial match. Because of industry standard dye lot variation, colors may not match exactly.

**Digital Swatch Card Color Matching:** Due to color variations on different monitors and color printers, actual swatch colors may vary slightly. Please request a memo sample from Mayer Fabrics to ensure proper color representation.

**Specifications:** Specifications are correct at the time of printing. Additional specifications are available on our website.

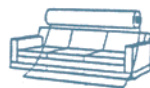
For information or assistance with products or services, call us at 800.428.4415 or refer to our website, [www.mayerfabrics.com](http://www.mayerfabrics.com).



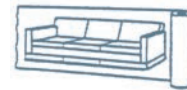
Water and Stain Repellent Finish



Railroaded: This feature allows reduction of seams and enables smoother furniture tailoring.



Fabric "up the roll" or "regular" position



Fabric "railroaded" or "top selvage" position

All railroaded patterns should be upholstered as shown on card.



**MAYERFABRICS**

GSA Contract #GS-28F-0022P

WNWNPCCD 51213

T 317.267.2626 or 800.428.4415 F 317.267.2629 or 877.7SAMPLE

[www.mayerfabrics.com](http://www.mayerfabrics.com)

©2013 Mayer-Paetz, Inc.